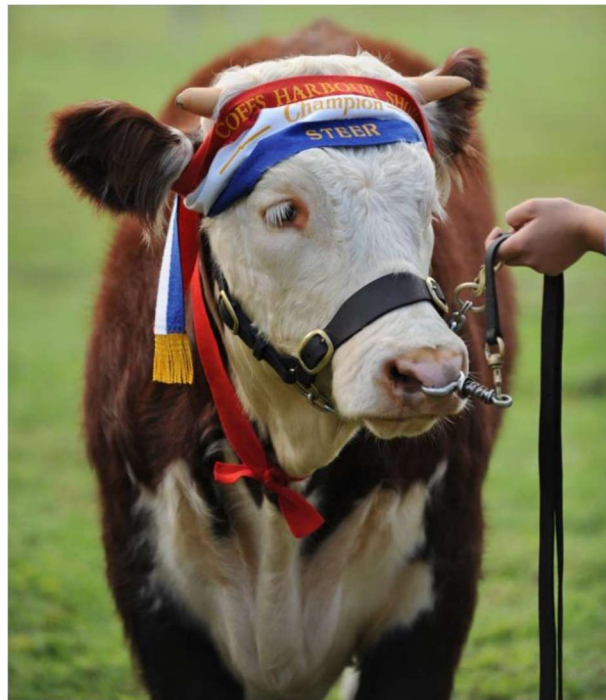


# COFFS HARBOUR AGRICULTURAL SHOW

Saturday 27th April 2024



## BEEF CATTLE



**SUPREME BEEF EXHIBIT  
SPONSORED BY**



**BEEF CATTLE SPONSORS 2024...**

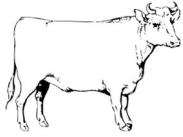


**KJ & CT  
CHEERS**



**Karangi NSW**

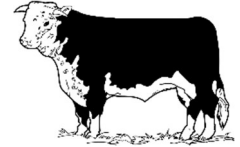




## SECTION 3 – BEEF CATTLE

PIC # NJ285702

AGE AS AT 1<sup>st</sup> APRIL 2024



**LODGING OF ENTRIES** Entries should be lodged as early as possible to assist the office staff.

**POST** The Secretary, Coffs Harbour Show Society, PO Box 219, Coffs Harbour NSW 2450

**PHONE** Karen Johnson 0409173070

**ONLINE** pavilionchshow@live.com anytime

**SHOWGROUND** From Monday 22<sup>nd</sup> April 2024 at the Exhibition Hall

**ENTRIES CLOSE** Wednesday 24<sup>th</sup> April 2024

**ENTRY FEE** \$5.00 per class unless otherwise specified

**JUDGING** Commences 9am Saturday 27th April 2024

**CHIEF STEWARD** Tim Cheers

**PRIZE MONEY** 1<sup>st</sup> ... \$ 10.00 + Ribbon

(Unless otherwise stated)

2<sup>nd</sup> ... \$ 6.00 + Ribbon

3<sup>rd</sup> ... Ribbon

- Reserve Champion Ribbons will only be awarded when there are three or more exhibits.
- Prize cards & ribbons will be awarded in Cattle Arena at completion of each class & money to be collected from bursar

**Cattle Neck Cards will be used this year. Please collect before Judging starts.**

**CONDITIONS:** These conditions and regulations apply to all breeds.

1. All exhibitors are to complete the JOHNS DISEASE Declaration form. Submit the original or a copy with the Animal entry form.
2. All exhibitors are to complete the Indemnity and Waiver form and submit with the animal entry form.
3. It is the exhibitors/owners responsibility to meet all obligations under the NLIS. The exhibitor/owner is to complete the NLIS Livestock Movement - Form A and submit. NLIS Tag Identification numbers are to be provided on the entry form.
4. All exhibitors must send in negative Pestivirus results for each beast with entries.
5. The age of stud beef cattle shall be the actual age up to and inclusive of 1st April 2024.
6. In any protest relative to age the Stewards reserve the right to mouth any exhibit and make the final decision.
7. All exhibits must be made available for inspection to persons nominated by the Society at any time, for any reason whatsoever.
8. All stock must be eligible for registration with the respective breed societies.
9. The Society will not hold itself responsible for any loss or mis-delivery of livestock or other exhibits at the Show or any damage there to.
10. Overnight accommodation is available from 4.00 pm on the day prior to Judging.
11. All cattle must be on the Showground by 7.30 am and remain until after the Parade or the committee may withhold any trophies, ribbons and / or prize money.
12. If any exhibitor/exhibit is not ready to parade when the class is called, then that class will go ahead without that exhibitor / exhibit.
13. It is the owners RESPONSIBILITY for the Handler to be capable of LEADING and animal.
14. HANDLER/LEADER must be over 12yrs of age to LEAD a BULL at the show.
15. All beef cattle must be paraded with a halter.
16. All bulls over 12 months of age must have nose ring and halter.
17. Heifer is a female that has not had a calf and is under 24 months of age.
18. A calf under 8 months of age may parade with its mother.
19. Neck straps, chains or suitable halter must be used on all cattle stalled in cattle sheds.
20. Exhibits not stalled or tied in designated areas may be disqualified. Sawdust bedding is provided by the Society, other bedding to be supplied by the Exhibitor

**ACKNOWLEDGEMENT, RELEASE AND INDEMNITY:** In entering, competitors and exhibitors agree to abide by any decision of the Committee and agree to compete/exhibit at their own risk and to indemnify and keep indemnified the Society and its Committee, Officials, Members and Volunteers against all claims, suits, actions or demands which may be brought against it in respect of any injuries or other loss sustained in the course of competing and/or exhibiting in any events and/or classes and agree to exonerate the Coffs Harbour Show Society Inc., its Committee and Members from all responsibility and from all loss or injury whether from alleged negligence or otherwise.

**PARTICIPANT INDEMNITY AND WAIVER FORM:** Each exhibitor must complete and sign an Indemnity and Waiver form.

**PRIZE MONEY:** Please see each section, prize money will only be awarded for second place when there are three or more entries in that class. Prize money not collected by 4pm on Sunday 28<sup>th</sup> April 2024 will be forfeited.

**PRIZES AND GST:** The Australian Taxation Office has deemed that GST is payable on prizes if an Exhibitor is registered for GST and enters an Exhibit as part of a business enterprise.

## TROPICAL BREEDS

- Class 1** Bull over 9 months and under 12 months  
**Class 2** Bull over 12 months and under 16 months  
**Class 3** Bull over 16 months and under 20 months  
**JUNIOR CHAMPION BULL – SASH**  
**RESERVE JUNIOR CHAMPION BULL - SASH**
- Class 4** Bull over 20 months and under 24 months  
**Class 5** Bull 24 months and over  
**CHAMPION BULL - SASH**  
**RESERVE CHAMPION BULL - SASH**
- Class 6** Female over 9 months and under 12 months  
**Class 7** Female over 12 months and under 16 month  
**Class 8** Female over 16 months and under 20 months  
**JUNIOR CHAMPION FEMALE – SASH**  
**RESERVE JUNIOR CHAMPION FEMALE - SASH**
- Class 9** Female over 20 months and under 24 months  
**Class 10** Female 24 months and over  
**SENIOR CHAMPION FEMALE - SASH**  
**RESERVE SENIOR CHAMPION FEMALE - SASH**

SPONSORED BY...



**Norco Rural**  
25 Wingara Drive  
Coffs Harbour 2450  
Ph: 6691 2800

Agricultural Chemicals  
Animal Feed  
Fertilisers  
Animal Supplements  
Seeds  
Fencing  
Farm Equipment

## BRITISH BREEDS

SPONSORED BY...



Advance Metal  
Industries Australia  
183 Orlando Street  
Coffs Harbour NSW 2450  
02 6652 6955

Windows & Doors  
Balustrading  
Powder Coating

- Class 11** Bull over 9 months and under 12 months  
**Class 12** Bull over 12 months and under 16 months  
**Class 13** Bull over 16 months and under 20 months  
**JUNIOR CHAMPION BULL – SASH**  
**RESERVE JUNIOR CHAMPION BULL - SASH**
- Class 14** Bull over 20 months and under 24 months  
**Class 15** Bull 24 months and over  
**CHAMPION BULL - SASH**  
**RESERVE CHAMPION BULL - SASH**
- Class 16** Female over 9 months and under 12 months  
**Class 17** Female over 12 months and under 16 month  
**Class 18** Female over 16 months and under 20 months  
**JUNIOR CHAMPION FEMALE – SASH**  
**RESERVE JUNIOR CHAMPION FEMALE - SASH**
- Class 19** Female over 20 months and under 24 months  
**Class 20** Female 24 months and over  
**SENIOR CHAMPION FEMALE - SASH**  
**RESERVE SENIOR CHAMPION FEMALE - SASH**

## EUROPEAN BREEDS

- Class 21** Bull over 9 months and under 12 months  
**Class 22** Bull over 12 months and under 16 months  
**Class 23** Bull over 16 months and under 20 months  
**JUNIOR CHAMPION BULL – SASH**  
**RESERVE JUNIOR CHAMPION BULL - SASH**
- Class 24** Bull over 20 months and under 24 months  
**Class 25** Bull 24 months and over  
**CHAMPION BULL - SASH**  
**RESERVE CHAMPION BULL - SASH**
- Class 26** Female over 9 months and under 12 months  
**Class 27** Female over 12 months and under 16 month  
**Class 28** Female over 16 months and under 20 months  
**JUNIOR CHAMPION FEMALE – SASH**  
**RESERVE JUNIOR CHAMPION FEMALE - SASH**
- Class 29** Female over 20 months and under 24 months  
**Class 30** Female 24 months and over  
**SENIOR CHAMPION FEMALE - SASH**  
**RESERVE SENIOR CHAMPION FEMALE - SASH**

SPONSORED BY ...



**Elders Rural Coffs Harbour**  
**70 Industrial Dr**  
**North Boambee Valley 2450**  
**02 6650 3400**

Elders Coffs Harbour specialises in a range of agricultural services and stocks the rural products you need, for every season.

---

## SMALL BREEDS

SPONSORED BY...



**Norco Rural**  
**25 Wingara Drive**  
**Coffs Harbour 2450**  
**Ph: 6691 2800**

Agricultural Chemicals  
Animal Feed  
Fertilisers  
Animal Supplements  
Seeds  
Fencing  
Farm Equipment

- Class 31** Bull over 9 months and under 12 months  
**Class 32** Bull over 12 months and under 16 months  
**Class 33** Bull over 16 months and under 20 months  
**JUNIOR CHAMPION BULL – SASH**  
**RESERVE JUNIOR CHAMPION BULL - SASH**
- Class 34** Bull over 20 months and under 24 months  
**Class 35** Bull 24 months and over  
**CHAMPION BULL - SASH**  
**RESERVE CHAMPION BULL - SASH**
- Class 36** Female over 9 months and under 12 months  
**Class 37** Female over 12 months and under 16 month  
**Class 38** Female over 16 months and under 20 months  
**JUNIOR CHAMPION FEMALE – SASH**  
**RESERVE JUNIOR CHAMPION FEMALE - SASH**
- Class 39** Female over 20 months and under 24 months  
**Class 40** Female 24 months and over  
**SENIOR CHAMPION FEMALE - SASH**  
**RESERVE SENIOR CHAMPION FEMALE - SASH**

# INTERBREEDS

<b>Class 41</b>	Pair of Bulls - under 20 months owned and bred by exhibitor
<b>Class 42</b>	Pair of Females - under 20 months owned and bred by exhibitor.
<b>Class 43</b>	Cow & Calf. Calf to be under 9mths.
<b>Class 44</b>	Breeders Group - To comprise of 3 animals, with both male and female represented. Exhibits must be owned by the exhibitor.
<b>Class 45</b>	Sires Progeny Group - 2 animals by the same sire, with both male and female represented. Exhibits must be owned by the exhibitor.
<b>Class 46</b>	Open Steer – any breed

SPONSORED BY ...



## CHARLINDA POLL HEREFORD STUD Karangi NSW

CLASS 46 – OPEN STEER WINNER –  
CASH, VOUCHER OR PRIZE TO THE  
VALUE OF \$50

### COFFS HARBOUR AGRICULTURAL SHOW 2024 – BEEF CATTLE

# GUESS THE WEIGHT?



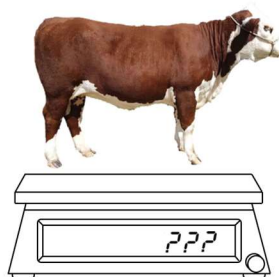
To view the cow and place your guess, head to the Cattle Stalls and Judging Area between 10am and 3pm on Saturday 27<sup>th</sup> April 2024



Winner will be contacted on Sunday 28<sup>th</sup> April 2024



**FREE ENTRY**



**\$50  
Prize**

Supplied By

**Big Country  
Meats**

**COW KINDLY SUPPLIED BY  
CHARLINDA POLL HEREFORDS**

#### TERMS AND CONDITIONS

- One guess per person
- Competition runs Saturday 27<sup>th</sup> April 2024, 10:00am – 3:00pm
- You must guess the exact weight or nearest guess to the weight wins
- If two people pick the same exact weight or closest weight, each name will be placed in a hat, and the winner will be randomly drawn

BIG COUNTRY MEATS  
232 Harbour Drive  
Coffs Harbour NSW 2450  
Ph: 02 6652 2197  
[www.bigcountrymeats.net.au](http://www.bigcountrymeats.net.au)

**COW WEIGHT GUESSING COMPETITION – SATURDAY 27<sup>TH</sup> APRIL 2024**

# JUNIOR PARADER COMPETITION

**PRIZE MONEY**      1<sup>st</sup> ...    \$ 20.00 + Ribbon  
(Unless otherwise stated)    2<sup>nd</sup> ...    \$ 6.00 + Ribbon  
   3<sup>rd</sup> ...    \$ 4.00 + Ribbon

SPONSORED BY ...

<b>Class 47</b>	Junior Parader 10 years and under
<b>Class 48</b>	Junior Parader 11 years and under 15 years
<b>Class 49</b>	Junior Parader 15 years and under 18 years
<b>Class 50</b>	Senior Parader 18 years and under 21 years
<b>Class 51</b>	Best Groomed and Paraded School Beef Animal by School Student (any breed, crossbreed, male or female)

**KJ & CT  
CHEERS**

**CLASS 51 WINNER – CASH,  
VOUCHER OR PRIZE TO THE  
VALUE OF \$50 TO BE  
GIVEN TO SCHOOL**

---

# JUNIOR JUDGING COMPETITION

SPONSORED BY ...

**PRIZE MONEY**      1<sup>st</sup> ...    \$ 20.00 + Ribbon  
   2<sup>nd</sup> ...    \$ 6.00 + Ribbon  
   3<sup>rd</sup> ...    \$ 4.00 + Ribbon

<b>Class 52</b>	Junior Judging 14 years and under
<b>Class 53</b>	Junior Judging 15 years and over

---

## CHAMPIONS OF SHOW

<b>JUNIOR CHAMPION FEMALE</b>	Sash
-------------------------------	------

<b>SENIOR CHAMPION FEMALE</b>	Sash
-------------------------------	------

<b>SUPREME CHAMPION BEEF FEMALE</b>	Sash + \$ 50 CASH
-------------------------------------	-------------------

---

<b>JUNIOR CHAMPION BEEF BULL</b>	Sash
----------------------------------	------

<b>SENIOR CHAMPION BEEF BULL</b>	Sash
----------------------------------	------

<b>SUPREME CHAMPION BEEF BULL</b>	Sash + \$ 50 CASH
-----------------------------------	-------------------

---

<b>SUPREME BEEF EXHIBIT</b>	Sash + Trophy + \$ 200 cash
-----------------------------	-----------------------------

Sponsored by ...



50 Armidale Street  
South Grafton NSW 2460  
6643 4411

[www.raydonovan.com.au](http://www.raydonovan.com.au)  
[reception@raydonovan.com.au](mailto:reception@raydonovan.com.au)

All exhibitors are encouraged to participate in the Grand Parade commencing at 2.00pm Saturday. All exhibitors leading, riding or driving an animal will go into the lucky draw.