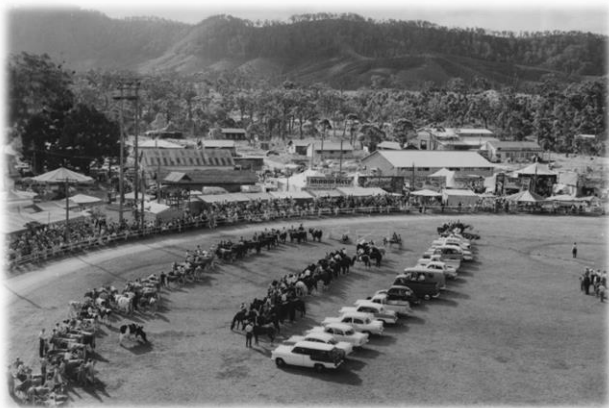


Coffs Harbour Agricultural Show 2024

110TH ANNIVERSARY

Embrace the past. Create the future.



Friday 26th April – Sunday 28th April

**Join us on
Judging Day**

Judging
4.00pm
Wednesday 24th April
@
King Tide Brewing
1 Studio Lane Coffs Harbour

**Enjoy a free
beer & chat
with the judges**

HOME BREW



COFFS HARBOUR SHOW SOCIETY INC.

P.O. BOX 219 COFFS HARBOUR 2450

PRESIDENT:	Alice Rehwinkel
TREASURE:	Lorraine Tibbs
SECRETARY:	Shannon Marsh
PAVILION CHIEF STEWARD:	Coleen Cheers/Jennifer Proctor
ENTRIES SECRETARY:	Karen Johnson

DAILY GATE PRICES

Friday, Saturday & Sunday

Adult **\$10** (16 years & over)
Child **\$ 5** (School Age -15 years) (Preschoolers free)
Aged Pension . . . **\$ 8**
Family Pass **\$25** (2 Adult – up to 4 children 15 years & under)

***NB** Every person pays entrance to grounds including competitors/exhibitors.*

SECTION 28 HOME BREW

Sponsored by King Tide Brewing & Country Brewer

ENTRY FEE: \$2.00

CLOSING DATE FOR ENTRIES: Sunday 21 April 2024

EXHIBIT DROP OFF: Monday 8 April – Sunday 21 April

- King Tide Brewing - 1 Studio Lane Coffs Harbour
- Country Brewer - 8/1-3 Hi-Tech Dr, Toormina

Entries to be dropped off with a completed entry form and entry fee.

EMAIL pavilionchshow@live.com or josh@kingtidebrewing.com.au

PRIZE: Champion All Grain Exhibit – will win a brew day at King Tide Brewing
Champion Extract Exhibit – will win \$100 instore credit from Country Brewer

JUDGING: Wednesday 24 April 2024 at King Tide Brewing. All competitors are invited to come to King Tide at 4pm on the day of judging for a **free beer!** and a chat with the judges.

IMPORTANT ENTRY INFO: Beers will be judged against AABC 2022 categories and styles, in the class groupings below.

In the description panel on the entry form, please note the following:

Class you are entering – Beer Style – Extract or All Grain. For Example:

- Class 2 – Lager – Munich Dunkel [BJCP 8A] – ALL GRAIN
- Class 4 – IPA – Hazy IPA [BJCP 21C] – EXTRACT
- Class 7 – Belgian, Strong & Wheat Beer – Wee Heavy [BJCP 17C] – ALL GRAIN

Class (See following pages for further class information)

1. **LOW ALCOHOL** (1.Low alcohol (<= 4% ABV))
2. **LAGER** (2.Pale Lager, 3.Amber & Dark Lager)
3. **PALE ALE** (4.Pale Ale, 5.American Pale Ale)
4. **IPA** (6.IPA, 7.Specialty IPA)
5. **AMBER AND DARK ALES** (8.Amber ale, 9.Brown Ale)
6. **STOUT & PORTER** (10.Porter, 11.Stout, 12.Strong Stout)
7. **BELGIAN, STRONG & WHEAT BEER** (13.Wheat & Rye Beer, 14.Belgian Ale, 15.Strong Ale & Lager)
8. **SOUR AND SPECIALTY** (16.Sour & Wild Ale, 17.Fruit & Spiced Beer, 18.Specialty Beer)
9. **MEAD & CIDER** (19.Mead, 20.Cider & Perry)

Prizes

Classes 1 – 9 Certificate & Sash

Class 10 CHAMPION ALL GRAIN EXHIBIT Sash & a brew day at King Tide Brewing!

Class 11 CHAMPION EXTRACT EXHIBIT Sash & win \$100 instore credit from Country Brewer

KING TIDE
BREWING

1 Studio Lane Coffs Harbour
(02) 56 42 42 42
cheers@kingtidebrewing.com.au
www.kingtidebrewing.com.au



8/1 Hi Tech Drive Toormina NSW 2452
02 6658 8397 / 0447 677 186
toormina@countrybrewer.com.au
www.countrybrewertoormina.com.au

AABC 2022 Categories

(judge using style descriptions in BJCP 2021 Beer and 2015 Mead/Cider guidelines)

Class 1	1. LOW ALCOHOL (\leq 4% ABV) Berliner Weisse [BJCP 23A] Scottish Light [BJCP 14A] Scottish Heavy [BJCP 14B] American Light Lager [BJCP 1A] London Brown Ale; Historical Beer [BJCP 27] Dark Mild [BJCP 13A] German Leichtbier [BJCP 5A] Czech Pale Lager [BJCP 3A] Ordinary Bitter [BJCP 11A] Piwo Grodziskie; Historical Beer [BJCP 27]	Class 5	8. AMBER ALE Best Bitter [BJCP 11B] American Amber Ale [BJCP 19A] Altbier [BJCP 7B] California Common [BJCP 19B] Strong Bitter [BJCP 11C]
	2. PALE LAGER American Lager [BJCP 1B] International Pale Lager [BJCP 2A] Munich Helles [BJCP 4A] Helles Exportbier (Dortmunder) [BJCP 5C] Pre-Prohibition Lager; Historical Beer [BJCP 27] German Pils [BJCP 5D] Czech Premium Pale Lager (Boh. Pils) [BJCP 3B] Festbier [BJCP 4B]		9. BROWN ALE Irish Red Ale [BJCP 15A] Scottish Export [BJCP 14C] Kentucky Common; Historical Beer [BJCP 27] British Brown Ale [BJCP 13B] American Brown Ale [BJCP 19C]
Class 2	3. AMBER & DARK LAGER International Amber Lager [BJCP 2B] Czech Amber Lager [BJCP 3C] International Dark Lager [BJCP 2C] Munich Dunkel [BJCP 8A] Vienna Lager [BJCP 7A] Märzen [BJCP 6A] Czech Dark Lager [BJCP 3D] Schwarzbier [BJCP 8B] Rauchbier [BJCP 6B] Kellerbier; Historical Beer [BJCP 27]	Class 6	10. PORTER English Porter [BJCP 13C] Pre-Prohibition Porter; Historical Beer [BJCP 27] American Porter [BJCP 20A] Baltic Porter [BJCP 9C]
	4. PALE ALE Cream Ale [BJCP 1C] Blonde Ale [BJCP 18A] Kölsch [BJCP 5B] Belgian Pale Ale [BJCP 24B] Australian Sparkling Ale [BJCP 12B] British Golden Ale [BJCP 12A] New Zealand Pilsner [BJCP X5] Belgian Blond Ale [BJCP 25A]		11. STOUT Sweet Stout [BJCP 16A] Irish Stout [BJCP 15B] Oatmeal Stout [BJCP 16B] Irish Extra Stout [BJCP 15C]
Class 3	5. AMERICAN PALE ALE American Pale Ale [BJCP 18B]	Class 7	12. STRONG STOUT Tropical Stout [BJCP 16C] Foreign Extra Stout [BJCP 16D] American Stout [BJCP 20B] Imperial Stout [BJCP 20C]
	6. IPA English IPA [BJCP 12C] American IPA [BJCP 21A] Double IPA [BJCP 22A]		13. WHEAT & RYE BEER Weissbier [BJCP 10A] Witbier [BJCP 24A] Lichtenhainer; Historical Beer [BJCP 27] American Wheat Beer [BJCP 1D] Dunkles Weissbier [BJCP 10B] Roggenbier; Historical Beer [BJCP 27] Weizenbock [BJCP 10C] Wheatwine [BJCP 22D]
Class 4	7. SPECIALTY IPA Hazy IPA [BJCP 21C] Specialty IPA [BJCP 21B]	14. BELGIAN ALE Saison [BJCP 25B] Bière de Garde [BJCP 24C] Belgian Dubbel [BJCP 26B] Belgian Single [BJCP 26A] Belgian Tripel [BJCP 26C] Belgian Golden Strong Ale [BJCP 25C] Belgian Dark Strong Ale [BJCP 26D]	

AABC 2022 Categories

(judge using style descriptions in BJCP 2021 Beer and 2015 Mead/Cider guidelines)

Class 7 (cont.)

15. STRONG ALE & LAGER

Helles Bock [BJCP 4C]
Dunkles Bock [BJCP 6C]
Doppelbock [BJCP 9A]
Eisbock [BJCP 9B]
Wee Heavy [BJCP 17C]
British Strong Ale [BJCP 17A]
Old Ale [BJCP 17B]
English Barleywine [BJCP 17D]
American Strong Ale [BJCP 22B]
American Barleywine [BJCP 22C]
Sahti; Historical Beer [BJCP 27]

16. SOUR & WILD ALE

Gose [BJCP 23G]
Lambic [BJCP 23D]
Gueuze [BJCP 23E]
Fruit Lambic [BJCP 23F]
Straight Sour Beer [BJCP 28D]
Flanders Red Ale [BJCP 23B]
Oud Bruin [BJCP 23C]
Brett Beer [BJCP 28A]
Mixed-Fermentation Sour Beer [BJCP 28B]
Wild Specialty Beer [BJCP 28C]

17. FRUIT & SPICE BEER

Fruit Beer [BJCP 29A]
Fruit and Spice Beer [BJCP 29B]
Specialty Fruit Beer [BJCP 29C]
Grape Ale [BJCP 29D]
Spice, Herb, or Vegetable Beer [BJCP 30A]
Autumn Seasonal Beer [BJCP 30B]
Winter Seasonal Beer [BJCP 30C]
Specialty Spice Beer [BJCP 30D]

18. SPECIALTY BEER

Classic Style Smoked Beer [BJCP 32A]
Specialty Smoked Beer [BJCP 32B]
Wood-Aged Beer [BJCP 33A]
Specialty Wood-Aged Beer [BJCP 33B]
Alternative Grain Beer [BJCP 31A]
Alternative Sugar Beer [BJCP 31B]
Experimental Beer [BJCP 34C]
Commercial Specialty Beer [BJCP 34A]
Mixed-Style Beer [BJCP 34B]

Class 8

19. MEAD

Dry Mead [BJCP M1A]
Semi-Sweet Mead [BJCP M1B]
Sweet Mead [BJCP M1C]
Cyser [BJCP M2A]
Pymment [BJCP M2B]
Berry Mead [BJCP M2C]
Stone Fruit Mead [BJCP M2D]
Melomel [BJCP M2E]
Fruit and Spice Mead [BJCP M3A]
Spice, Herb, or Vegetable Mead [BJCP M3B]
Braggot [BJCP M4A]
Historical Mead [BJCP M4B]
Experimental Mead [BJCP M4C]

Class 9

20. CIDER & PERRY

New World Cider [BJCP C1A]
English Cider [BJCP C1B]
French Cider [BJCP C1C]
New World Perry [BJCP C1D]
Traditional Perry [BJCP C1E]
New England Cider [BJCP C2A]
Cider with Other Fruit [BJCP C2B]
Applewine [BJCP C2C]
Ice Cider [BJCP C2D]
Cider with Herbs/Spices [BJCP C2E]
Specialty Cider/Perry [BJCP C2F]



Coffs Harbour Show Society Inc.
 PO Box 219, Coffs Harbour 2450 Phone: 0409 173 070
 email: pavilionchshow@live.com

EXHIBITORS ENTRY FORM

Please check all sections for closing dates and times. **NO LATE ENTRIES WILL BE ACCEPTED**

Section	Class	Description – name of animal, person or exhibit	Entry Fee
eg: 28	7	American Wheat Beer (BJCP 1D) (All Grain)	\$2
Total			\$

I have read and agreed to abide by the Rules and Regulations of the Coffs Harbour Show Society and will not hold the Society responsible for any loss or damage to exhibits, accident, wrongful delivery or any other cause whatsoever.

Please Print

Entrants Name:	
Parent/Guardian Name: (If Entrant Under 18)	
Address:	
email:	Phone:
Signed:	Date:

Special Thanks to Our Wonderful Sponsors

Rex's Car Wash – Bailey Centre Coffs Harbour
Email: gavinhollins@hotmail.com

Coffs Harbour City Locksmith – 40 Marcia Street Coffs Harbour
Ph: 6651 1336 Email: info@chclocksmith.com.au

Pat's Mower Service – 2/8 Marcia Street Coffs Harbour
Ph: 6651 1743 Email: patsmowerservice@hotmail.com

Morrison's Betta Home Living – 3 Gerard Drive Coffs Harbour
Ph: 6652 8062 Email: morrison@my.betta.com.au

It's A Matter Of Money – PO Box 1069 Coffs Harbour
Ph: 5626 5377 Mob: 0417 462 273 Email: jared@itsamatterofmoney.com

Jax's Tyres – 58 Grafton Street Coffs Harbour
Ph: 652 7999 Email: coffsharbour@jax.com.au

The Clog Barn – 215 Pacific Highway Coffs Harbour
Ph: 6652 4633 Email: enquiries@clogbarn.com.au

Equity Real Estate – 7a 30 Orlando Street Coffs Harbour
Mob: 0481 093 299 Email: vanessa@equityfirstrealestate.com.au

Stitches By The Sea – 10 Gundagai Street Coffs Harbour
Mob: 0412 355 438 Email: infostitchesbythesea@gmail.com.au

Cook Drive Smash Repairs – 16 Cook Drive Coffs Harbour
Ph: 6652 4122 Email: info@cookdrivesmash.com.au

Win's Thai Kitchen – 2/44 Moonee Street Coffs Harbour
Ph: 6652 8900

Coffs Harbour Newsagency – 92-98 Harbour Drive Coffs Harbour
Ph: 6652 1512 Email: coffsnews@gmail.com

Creative Sewing Centre – 268 Beryl Street Coffs Harbour
Ph: 6652 1863 Email: creativesew2@gmail.com

The Paper Boys – 8/9 GDT Seccombe Close Coffs Harbour
Ph: 6651 2799 Email: sales@thepaperboys.com.au

TJM Troy Johnstone Motors – 1 June Street Coffs Harbour
Ph: 6652 4501 Email: tjohnstonemotors@gmail.com

C.ex Coffs Camera Club
Email – c.ex_camera_club@hotmail.com

Special Thanks to Our Wonderful Sponsors






- All Mechanical Repairs
- Pink & Blue Slips
- Auto Transmission
- Brake & Clutch Repairs
- Wheel Alignment
- Tyres
- Manuals & Diffs
- Air Con Servicing
- Handbook Servicing

FALKEN TYRES


WILDPEAK A/T A33W




37 Lawson Cres,
Coffs Harbour NSW 2450

Contact Us Today

Ph: 6651 7004



PTV LTD
MASTER LIC. NO 407438063

11/41 Industrial Drive North Boambee Valley
Ph: 6652 6201
Email: accounts@cclockmart.com.au

- Domestic Locksmiths
- Commercial Locksmiths
- Auto Locksmiths
- Security Locksmiths
- Safes

Special Thanks to Our Wonderful Sponsors



PROUDLY CARING FOR THE FAMILIES OF THE COFFS COAST FOR OVER 25 YEARS.

Whether it's to arrange a fitting farewell for a loved one, or time to plan ahead - come and speak with us.

132 WEST HIGH STREET, COFFS HARBOUR

funeralcoffsharbour.com.au

24 hours, 7 days:

Phone: 665 15007



G. K. Denney Tyres

12 – 16 Fraser Drive Coffs Harbour

Ph: 6652 2544

Email: gkdtvres@westnet.com.au



232 Harbour Drive Coffs Harbour

Ph: 6652 2197

Email: sales@bigcountrymeats.net.au

Special Thanks to Our Wonderful Sponsors



WE GET THE JOB DONE!

BUILDING TRUST
WITH QUALITY WORK

Ph: 0400 922 725 Email: WILKConstructions@gmail.com



Coffs Quilters & Needlecraft Inc.

Thursday 9.00am – 12.00 noon
Cavanbah Hall Coffs Harbour



Patchwork Quilting Knitting
Crochet Embroidery Any Fibrecraft welcome

Secretary Mob: 0408 651 839 Email: cqan1989@gmail.com



Specialising in Battery & Auto Electrical
Sales & Repairs

Email: info@bcbcoffs.com.au
www.bananacoastbatteries.com.au



44 Marcia Street
Coffs Harbour

66 52 4455



Special Thanks to Our Wonderful Sponsors

TheCreativeToyShop



Unit 6, 22-24 Marcia Street,
Coffs Harbour

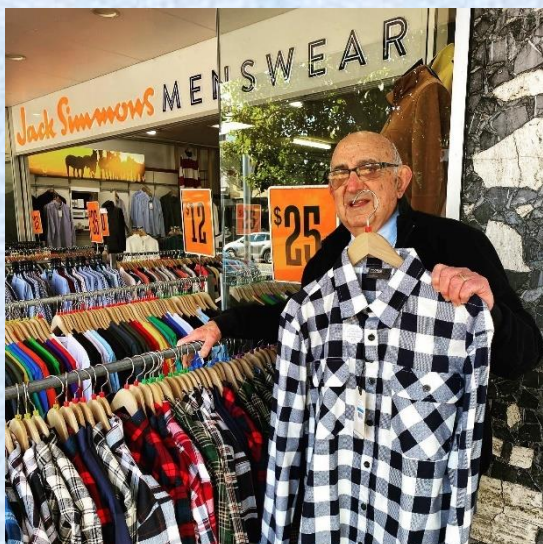
Monday – Friday
9.30am – 2.30pm

Saturday
9.00am – 12.00pm

0423 388 978

Email: hello@thecreativetoystore.com.au
www.thecreativetoystore.com.au

Jack Simmons Menswear



Footwear	Formal Wear	Jackets & Coats
Shirts	Suits	Trousers
Sleepwear	Denim	Underwear & Socks
Shorts	Knitwear	Formal Wear

33 Harbour Drive Coffs Harbour

Ph: 6652 3272

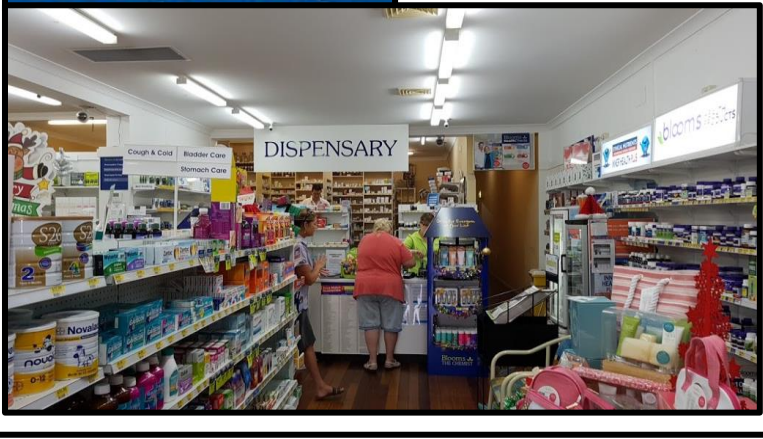
Special Thanks to Our Wonderful Sponsors



6 North Boambee Rd, Coffs Harbour NSW 2450
PH: [02 6652 7544](tel:0266527544)
Email: info@watsonslisurecentre.com.au



37 First Avenue Sawtell
Ph: 6653 1227
Email:
sawtell@blooms.net.au



Park Beach Homebase Centre,
252 Pacific Highway,
Coffs Harbour NSW 2450
Ph:(02) 6691 9700

Special Thanks to Our Wonderful Sponsors



**YOUR
SHED
PROFESSIONAL**

309 Pacific Highway
Coffs Harbour

Ph: 6650 9811
Mob: 0459 919 811

Email: coffs@nationalsheds.com.au
www.nationalshedsandshelters.com.au



Australian Soil & Concrete Testing

Luke Daly **ASCT**
Director

17 June Street Coffs Harbour
Ph: 6649 1172 Mob: 0410 082 69
Email: luke.daly@asct.com.au
coffs.coast@asct.com.au
Web: asct.com.au

Special Thanks to Our Wonderful Sponsors

CLAYTON+FOSTER ACCOUNTANTS



Coffs Harbour Office

6 Lyster Street, Coffs Harbour NSW 2450

Ph: 6656 8000

Web: cafa.com.au

Bellingen Office

17 William Street, Bellingen NSW 2454

Ph: 6655 1977

Web: cafa.com.au



KING TIDE BREWING

1 Studio Lane Coffs Harbour

0416 291 541

cheers@kingtidebrewing.com.au



Special Thanks to Our Wonderful Sponsors

BC

The BAILEY Centre

Supporting the local community

24 Hr Liberty Service Station



TOYWORLD

where the best toys come from



27 Park Beach Road Coffs Harbour
Ph: 6652 5412
Email: coffs@toyworld.com.au
Web: toyworld.com.au

