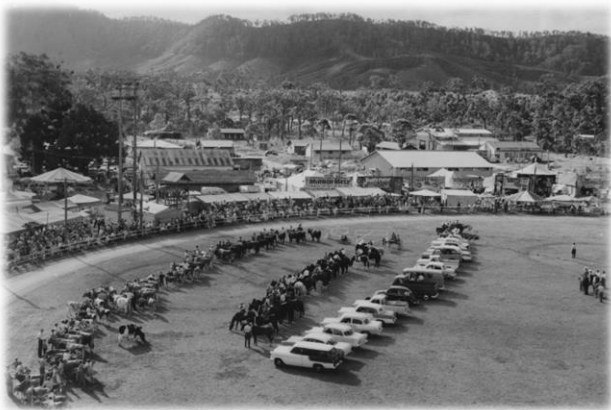


# Coffs Harbour Agricultural Show 2024

# 110<sup>TH</sup> ANNIVERSARY

Embrace the past. Create the future.



Friday 26<sup>th</sup> April – Sunday 28<sup>th</sup> April



**NEW CLASSES  
IN COOKING**

New Banana Cake  
New Cake that Flopped

**NEW CLASSES  
IN HONEY**



**PAVILION SCHEDULE**



**COFFS HARBOUR SHOW SOCIETY INC.**

**P.O. BOX 219 COFFS HARBOUR 2450**

<b>PRESIDENT:</b>	Alice Rehwinkel
<b>TREASURE:</b>	Lorraine Tibbs
<b>SECRETARY:</b>	Shannon Marsh
<b>PAVILION CHIEF STEWARD:</b>	Coleen Cheers/Jennifer Proctor
<b>ENTRIES SECRETARY:</b>	Karen Johnson

## **DAILY GATE PRICES**

### **Friday, Saturday & Sunday**

**Adult** ..... \$10 (16 years & over)  
**Child** ..... \$ 5 (School Age -15 years) (Preschoolers free)  
**Aged Pension** ... \$ 8  
**Family Pass** ..... \$25 (2 Adult – up to 4 children 15 years & under)

***NB** Every person pays entrance to grounds including competitors/exhibitors.*



Ph: 6658 9757      0466 306 220

Email entries to: [pavilionchshow@live.com](mailto:pavilionchshow@live.com)

## EXHIBITOR INFORMATION

While the committee will take every precaution under the circumstances, to ensure the safety of articles sent to the exhibitions, they wish it to be distinctly understood that the owners themselves must take the risk of exhibiting them and should any article be lost or stolen the committee will not hold themselves responsible.

Competitors in Horse events, Jumping and all other events set out in the Society's Schedule compete in same at their own risk. The Show Society has no liability.

**EARLY LODGING OF ENTRIES:** All entries should be lodged as early as possible to assist the office staff. Entries may be posted to: Pavilion Secretary, Coffs Harbour Show Society, PO Box 219, COFFS HARBOUR NSW 2450

**EMAIL:** [pavilionchshow@live.com](mailto:pavilionchshow@live.com) anytime

**ACKNOWLEDGEMENT, RELEASE AND INDEMNITY:** In entering, competitors and exhibitors agree to abide by any decision of the Committee and agree to compete/exhibit at their own risk and to indemnify and keep indemnified the Society and its committee, officials, members and volunteers against all claims, suits, actions or demands which may be brought against it in respect of any injuries or other loss sustained in the course of competing and/or exhibiting in any events and/or classes and agree to exonerate the Coffs Harbour Show Society Inc., its committee and members from all responsibility and from all loss or injury whether from alleged negligence or otherwise.

**EXHIBITION HALL:** Exhibits which have won a major prize at a previous Coffs Harbour Show cannot be entered for Judging. They may however, be included for display purposes subject to the availability of suitable space and after Judging has been completed.

**PRIZE AWARDS:** Judges may, at their discretion, award 1<sup>st</sup> and/or 2<sup>nd</sup> prizes and/or make Highly Commended Awards. Judges also have the discretion to make no prize or award in a Class if, in their opinion, there is no exhibit in its class worthy of a prize or award.

**PRIZE MONEY:** Prize money will only be awarded to 1<sup>st</sup> prize if 3 or more exhibits are entered in that class. Prize money will only be paid to 2<sup>nd</sup> prize if 4 or more exhibits are entered in that class.

Prize money may be collected from the **Boardroom Norm Jordan Function Centre** on:

*Saturday 27<sup>th</sup> April 3.00pm – 4.00pm*

*Sunday 28<sup>th</sup> April 3.30pm – 4.00pm*

*Monday 29<sup>th</sup> April from 9.00am -10.00am –Exhibition Hall*

*Prize money and exhibits not collected by 10.00am Monday 29<sup>th</sup> April 2024 will be forfeited.*

**PRIZES AND GST:** The Australian Taxation Office has deemed that GST is payable on prizes if an Exhibitor is registered for GST and enters an Exhibit as part of a business enterprise.

**EXHIBIT PICKUP:** Exhibits may be picked up Sunday 28<sup>th</sup> April 4.00 – 5.30pm



*G. K. Denney Tyres*

12 – 16 Fraser Drive Coffs Harbour  
Ph: 6652 2544  
Email: [gkdyres@westnet.com.au](mailto:gkdyres@westnet.com.au)



## INDEX JUNIOR SECTIONS

Section	Page	Section	Page	
1	Horses	separate schedule	12	Flowers & Plants .....7
3	Beef Cattle	separate schedule	14	Paper Craft.....8
4	Poultry	separate schedule	15	Junior Art & Craft.....9 – 10
5	Cats	cancelled	24	Cooking.....11
8	Lego.....15	25	Cake Decoration.....12	
10	Fresh Produce .....6	26	Photography .....13	

## INDEX

Section	Page	Section	Page	
1	Horses	separate schedule	18	Knitting & Crochet.....30
3	Beef Cattle	separate schedule	19	Needlework.....31
4	Poultry	separate schedule	20	Patchwork, Applique & Quilting.....32
5	Cats	cancelled	20	AgShows Patchwork Quilt.....33
8	Lego.....15	21	Jams & Preserves.....34	
9	Honey, Mead & Beeswax.....16 – 18	24	BANANA GROWERS Banana Cake Comp...35	
10	Fresh Produce ..... 20 – 22	24	BAILEY CENTRE Scone Comp.....36	
11	Bananas.....23	24	MILLS-THOM'S Fruit Cake Comp.....37	
12	Flowers & Plants .....24 – 26	24	Cooking.....38 – 40	
14	Paper Craft.....27	25	RAS/AgShows Fruit Cake Comp.....40	
17	Craft Work.....28	25	Cake Decoration.....41 – 42	
17	RAS/AgShows Wool Competition.....29	26	Photography.....43	

Email entries to: [pavilionchshow@live.com](mailto:pavilionchshow@live.com)

# *Most Successful Exhibitor*

*in Exhibition Hall*

## *Certificate, Sash & \$500*

*Accumulation of points earned from placings.*

*To be eligible you must enter in 3 Sections.*

*(E.g. Section 12 Flowers & Plants, Section 14 Paper Craft &  
Section 24 Cooking)*

**Sponsored by Coffs Harbour Show Society Women's Auxiliary**

# *Most Successful Junior Exhibitor*

*in Exhibition Hall*

## *Certificate, Sash & \$150*

*Accumulation of points earned from placings.*

*To be eligible you must enter in 3 Sections.*

*(E.g. Section 12 Junior Flowers & Plants, Section 14 Junior Paper Craft &  
Section 24 Junior Cooking)*

# JUNIOR SECTION

## SECTION 10 FRESH PRODUCE

**ENTRY FEE:** \$1.00

**EARLY LODGING OF ENTRIES:** Entries should be lodged as early as possible to assist the office staff.

**POST** ..... The Secretary, Coffs Harbour Show Society, PO Box 219, Coffs Harbour NSW 2450

**EMAIL** ..... [pavilionchshow@live.com](mailto:pavilionchshow@live.com) anytime

**SHOWGROUND** .... 8.00 - 5.00pm Monday 22nd April to Wednesday 24<sup>th</sup> (Look for sign)

**CLOSING DATE FOR ENTRY FORMS:** 5.00pm Wednesday 24<sup>th</sup> April, 2024

**EXHIBIT DROP OFF DATE:** No later than 9.00am Friday 26<sup>th</sup> April 2024

**EXHIBIT PICKUP:** 4.00pm Sunday 28<sup>th</sup> April 2024

**PRIZE:** 1st \$3.00 2nd \$2.00 unless otherwise stated.

Prize money will only be awarded to 1<sup>st</sup> prize if 2 or more exhibits are entered in that class.

Prize money will only be paid to 2<sup>nd</sup> prize if 3 or more exhibits are entered in that class.

### 16 years & Under Fruit & Vegetables

Class	Qty	Class	Qty
<b>33</b> Hen Eggs in carton, with faces drawn, <b>not painted</b> .....	6	<b>40</b> Fruit or Vegetable with the most colour.....	1
<b>34</b> Pumpkin or Gramma, smallest, must be mature.....	1	<b>41</b> Novelty article made from Fruit and/or Vegetables. Embellishments allowed	
<b>35</b> Pumpkin or Gramma, largest by volume.....	1	<b>42</b> Sculpture made from Fruit and/ or Vegetable, embellishments allowed	
<b>36</b> Pumpkin or Gramma, celebrity lookalike....	1	<b>43</b> Beans, any variety.....	3
<b>37</b> Oddest shaped vegetable.....	1	<b>44</b> Tiny Tomatoes, any variety.....	3
<b>38</b> My favourite vegetable.....	1	<b>45</b> Zucchini, longest.....	1
<b>39</b> My favourite fruit.....	1	<b>46</b> Radish, any variety.....	3

**JUNIOR CHAMPION EXHIBIT 33 – 46 Certificate & Sash**

**Email entries to: [pavilionchshow@live.com](mailto:pavilionchshow@live.com)**

# JUNIOR SECTION

## SECTION 12 FLOWERS & PLANTS

**ENTRY FEE:** \$1.00

**EARLY LODGING OF ENTRIES:** Entries should be lodged as early as possible to assist the office staff.

**POST** ..... The Secretary, Coffs Harbour Show Society, PO Box 219, Coffs Harbour NSW 2450

**EMAIL** ..... [pavilionchshow@live.com](mailto:pavilionchshow@live.com) anytime

**SHOWGROUND** .... Monday 22<sup>nd</sup> April to Wednesday 24<sup>th</sup> April 8.00am-5.00pm (Look for sign)

**CLOSING DATE FOR ENTRY FORMS:** 5.00pm Wednesday 24<sup>th</sup> April, 2024

**EXHIBIT DROP OFF DATE: NO** later than 9.00am Friday 26<sup>th</sup> April, 2024

**EXHIBIT PICKUP:** 4.00pm Sunday 28<sup>th</sup> April, 2024

**PRIZE:** 1st \$3.00 2nd \$2.00 unless otherwise stated.

Prize money will only be awarded to 1<sup>st</sup> prize if 2 or more exhibits are entered in that class.

Prize money will only be paid to 2<sup>nd</sup> prize if 3 or more exhibits are entered in that class.

### Junior Decorative

#### 13 – 17 years

##### Class

- 59 Arrangement suitable for your birthday party
- 60 Plant material in a pre-loved object e.g. boot.
- 61 Mini Garden e.g. Fairy or Farmyard

#### 10 – 12 years

##### Class

- 62 Plant material in a pre-loved object e.g. boot.
- 63 Posy of flowers for Mum
- 64 Mini Garden e.g. Fairy or Farmyard

#### 7 – 9 years

##### Class

- 65 Plant material in a pre-loved object e.g. boot.
- 66 Posy of flowers for Mum
- 67 Mini Garden e.g. Fairy or Farmyard

#### 6 years and under

##### Class

- 68 Plant material in a pre-loved object e.g. boot.
- 69 Posy of flowers for Mum
- 70 Mini Garden e.g. Fairy or Farmyard

**JUNIOR CHAMPION EXHIBIT Classes 59 – 70** Certificate & Sash

**MINI GARDENS Classes 61, 6, 67 & 70 – *Sponsored by Green Thumb Landscaping***

# JUNIOR SECTION

## SECTION 14 PAPER CRAFT

**ENTRY FEE:** \$1.00

**EARLY LODGING OF ENTRIES:** Entries should be lodged as early as possible to assist the office staff.

**POST** ..... The Secretary, Coffs Harbour Show Society, PO Box 219, Coffs Harbour NSW 2450

**EMAIL** ..... [pavilionchshow@live.com](mailto:pavilionchshow@live.com) anytime

**SHOWGROUND** .... 8.00 - 5.00pm Monday 22nd April to Wednesday 24th(Look for sign)

**CLOSING DATE FOR ENTRY FORMS:** 5.00pm Wednesday 24<sup>th</sup> April, 2024

**EXHIBIT DROP OFF DATE:** 5.00pm Wednesday 24<sup>th</sup> April, 2024

**EXHIBIT PICKUP:** 4.00pm Sunday 28<sup>th</sup> April, 2024

**PRIZE:** 1st \$3.00 2nd \$2.00 unless otherwise stated.

Prize money will only be awarded to 1<sup>st</sup> prize if 2 or more exhibits are entered in that class.

Prize money will only be paid to 2<sup>nd</sup> prize if 3 or more exhibits are entered in that class.

**All entries must be the bona fide work of exhibitor and been completed in the last three years.**

Steward or Judge has the discretion to move an article to another class if it is incorrectly entered.

### **Junior Scrapbooking – Single or Double Page 30cm x 30cm**

#### **High School Students**

**Class**

- 11 Animals
- 12 About Me

**Class**

- 13 Sport
- 14 Any Subject

#### **Primary School Students**

**Class**

- 15 Babies & Children
- 16 Animals

**Class**

- 17 Sport
- 18 Any Subject

**Class 19 – JUNIOR CHAMPION EXHIBIT** Classes 11 – 18 Certificate & Sash

### **Junior Card Making**

#### **High School Students**

**Class**

- 28 Christmas Card
- 29 Birthday Card

**Class**

- 30 Any Subject

#### **Primary School Students**

**Class**

- 31 Christmas Card
- 32 Birthday Card

**Class**

- 33 Any Subject

**JUNIOR CHAMPION EXHIBIT** Classes 28 – 33 Certificate & Sash



# JUNIOR SECTION

## SECTION 15 JUNIOR ART & CRAFT

**ENTRY FEE:** \$1.00

**EARLY LODGING OF ENTRIES:** Entries should be lodged as early as possible to assist the office staff.

**POST** ..... The Secretary, Coffs Harbour Show Society, PO Box 219, Coffs Harbour NSW 2450

**EMAIL** ..... [pavilionchshow@live.com](mailto:pavilionchshow@live.com) anytime

**SHOWGROUND** .... 8.00 - 5.00pm Monday 22nd April to Wednesday 24<sup>th</sup> (Look for sign)

**CLOSING DATE FOR ENTRY FORMS:** 5.00pm Wednesday 24<sup>th</sup> April, 2024

**EXHIBIT DROP OFF DATE:** 5.00pm Wednesday 24<sup>th</sup> April, 2024

**EXHIBIT PICKUP:** 4.00pm Sunday 28<sup>th</sup> April, 2024

**PRIZE:** 1st \$3.00 2nd \$2.00 unless otherwise stated.

Prize money will only be awarded to 1<sup>st</sup> prize if 2 or more exhibits are entered in that class.

Prize money will only be paid to 2<sup>nd</sup> prize if 3 or more exhibits are entered in that class.

**All entries must be the bona fide work of exhibitor and been completed in the last three years.**

### 13 – 17 years

#### **Class**

- 1** Painting no larger than 50 x 60cm
- 2** Drawing, Black & White only no larger than 50 x 60cm
- 3** Drawing, Coloured only no larger than 50 x 60cm
- 4** Decorated pencil holder made from large spaghetti tin

#### **Class**

- 5** Playdough or Plasticine creation
- 6** French Knitting – Longest piece in length
- 7** Face painted on a rock.
- 8** Article of Handicraft—own choice

### 10 – 12 years

#### **Class**

- 9** Painting no larger than 50 x 60cm
- 10** Drawing, Black & White only no larger than 50 x 60cm
- 11** Drawing, Coloured only no larger than 50 x 60cm
- 12** Decorated pencil holder made from large spaghetti tin

#### **Class**

- 13** Playdough or Plasticine creation
- 14** French Knitting – Longest piece in length
- 15** Face painted on a rock.
- 16** Article of Handicraft—own choice

**Email entries to: [pavilionchshow@live.com](mailto:pavilionchshow@live.com)**

# JUNIOR SECTION

## SECTION 15 JUNIOR ART & CRAFT

### 7 – 9 years

#### Class

- 17 Painting no larger than 50 x 60cm
- 18 Drawing, Black & White only no larger than 50 x 60cm
- 19 Drawing, Coloured only no larger than 50 x 60cm
- 20 Decorated pencil holder made from large spaghetti tin

#### Class

- 21 Playdough or Plasticine creation
- 22 French Knitting – Longest piece in length
- 23 Face painted on a rock.
- 24 Article of Handicraft—own choice

### 6 years and Under

#### Class

- 25 Painting no larger than 50 x 60cm
- 26 Drawing, Black & White only no larger than 50 x 60cm
- 27 Drawing, Coloured only no larger than 50 x 60cm
- 28 Decorated pencil holder made from large spaghetti tin

#### Class

- 29 Playdough or Plasticine creation
- 30 French Knitting – Longest piece in length
- 31 Face painted on a rock.
- 32 Article of Handicraft—own choice

**JUNIOR CHAMPION EXHIBIT Classes 1—32 Certificate & Sash**

# TheCreativeToyShop



Unit 6, 22-24 Marcia Street,  
Coffs Harbour

Monday – Friday

9.30am – 2.30pm

Saturday

9.00am – 12.00pm

0423 388 978

Email: [hello@thecreativetoystore.com.au](mailto:hello@thecreativetoystore.com.au)

[www.thecreativetoystore.com.au](http://www.thecreativetoystore.com.au)

# JUNIOR SECTION

## SECTION 24 COOKING

**ENTRY FEE:** \$1.00

**EARLY LODGING OF ENTRIES:** Entries should be lodged as early as possible to assist the office staff.

**POST** ..... The Secretary, Coffs Harbour Show Society, PO Box 219, Coffs Harbour NSW 2450

**EMAIL** ..... [pavilionchshow@live.com](mailto:pavilionchshow@live.com) anytime

**SHOWGROUND** .... 8.00 - 5.00pm Monday 22nd April to Wednesday 24<sup>th</sup> (Look for sign)

**CLOSING DATE FOR ENTRY FORMS:** 5.00pm Wednesday 24<sup>th</sup> April, 2024

**EXHIBIT DROP OFF DATE: NO** later than 9.00am Friday 26<sup>th</sup> April, 2024

**EXHIBIT PICKUP:** 4.00pm Sunday 28<sup>th</sup> April, 2024

**PRIZE:** 1st \$3.00 2nd \$2.00 unless otherwise stated.

Prize money will only be awarded to 1<sup>st</sup> prize if 2 or more exhibits are entered in that class.

Prize money will only be paid to 2<sup>nd</sup> prize if 3 or more exhibits are entered in that class.

**Unless otherwise specified exhibits to be placed on foil covered hard cardboard 14cm x 22cm**

**PLEASE NOTE:** FRESH CREAM IS NOT to be used to decorate as fresh cream sours quickly in showcases.

### 13 – 17 year old

#### **Class**

- 35** Cake – Bar or Loaf tin, no ring tins
- 36** Muffins – 4 any variety
- 37** Butter Cake – Iced on top only
- 38** Cupcakes Cakes – 4 decorated
- 39** Biscuits – 4 any variety
- 40** Cake – Decorated with Butter Icing & Lollies

### 10 – 12 year old

#### **Class**

- 41** Cake – Bar or Loaf tin, no ring tins
- 42** Muffins – 4 any variety
- 43** Butter Cake – Iced on top only
- 44** Cupcakes Cakes – 4 decorated
- 45** Biscuits – 4 any variety
- 46** Cake – Decorated with Butter Icing & Lollies

### 7 – 9 year old

#### **Class**

- 47** Gingerbread Person – Decorated
- 48** Packet Cake – Iced on top
- 49** Cupcakes Cakes – 4 decorated
- 50** Muffins – 4 any variety
- 51** Biscuits – 4 any variety
- 52** Cake – Decorated with Butter Icing & Lollies

### 6 years and under

#### **Class**

- 53** Gingerbread Person – Decorated
- 54** Cupcakes Cake – 1/2 Decorated
- 55** Arrowroot Biscuit – 4 Decorated

### **JUNIOR CHAMPION EXHIBIT**

**Classes 35 – 55** Certificate & Sash

# **JUNIOR SECTION**

## **SECTION 25 CAKE DECORATION**

**ENTRY FEE:** \$1.00

**EARLY LODGING OF ENTRIES:** Entries should be lodged as early as possible to assist the office staff.

**POST** ..... The Secretary, Coffs Harbour Show Society, PO Box 219, Coffs Harbour NSW 2450

**ONLINE** ..... [pavilionchshow@live.com](mailto:pavilionchshow@live.com) anytime

**SHOWGROUND** .... Monday 22 April to Wednesday 28<sup>th</sup> April 8.00am-5.00pm Exhibition Hall

**CLOSING DATE FOR ENTRY FORMS:** 5.00pm Wednesday 24<sup>th</sup> April, 2024

**EXHIBIT DROP OFF DATE:** 1.00pm Thursday 25<sup>th</sup> April or **NO** later than 9.00am Friday 26<sup>th</sup> April, 2024

**EXHIBIT PICKUP:** 4.00pm Sunday 28<sup>th</sup> April, 2024

**All entries the work of exhibitor and only one entry per class**

**Please note: Fondant/ready to roll icing only for Classes 13, 14 & 15**

### **16 years and under**

#### **Class**

- 13** Decorated Cake – not buttercream

### **11-16 years**

- 14** Cup Cakes: Up to Seven (7) for a special celebration on a board no bigger than 25cm. Decorations can be a variety of your theme

### **10 years and Under**

- 15** Cup Cakes: Up to Seven (7) for a special celebration on a board no bigger than 25cm. Decorations can be a variety of your theme

Sponsors and Supporters  
of Section 25:

*Coffs Coast District Cake and Sugar Artists of NSW Inc*

Contact for Information on cake decorating:  
Carol 0418 304 106 Denise 6652 3986

# JUNIOR SECTION

## SECTION 26 PHOTOGRAPHY

**ENTRY FEE:** \$1.00

**EARLY LODGING OF ENTRIES:** Entries should be lodged as early as possible to assist the office staff.

**POST** ..... The Secretary, Coffs Harbour Show Society, PO Box 219, Coffs Harbour NSW 2450

**EMAIL** ..... [pavilionchshow@live.com](mailto:pavilionchshow@live.com) anytime

**SHOWGROUND** .... Monday 22<sup>nd</sup> April to Wednesday 24<sup>th</sup> April 8.00am-5.00pm (Look for sign)

**CLOSING DATE FOR ENTRY FORMS:** 5.00pm Wednesday 24<sup>th</sup> April, 2024

**EXHIBIT DROP OFF DATE:** 5.00pm Wednesday 24<sup>th</sup> April, 2024

**EXHIBIT PICKUP:** 4.00pm Sunday 28<sup>th</sup> April, 2024

**PRIZE:** 1st \$3.00 2nd \$2.00 unless otherwise stated.

Prize money will only be awarded to 1<sup>st</sup> prize if 2 or more exhibits are entered in that class.

Prize money will only be paid to 2<sup>nd</sup> prize if 3 or more exhibits are entered in that class.

**All entries must be the bona fide work of exhibitor**

### **Guidelines:**

- Photographs **MUST** be taken by, but not necessarily processed, by the exhibitor and be no more than **two years old**.
- Any modification of the image must be done by the exhibitor or under their personal direction.
- Number of entries per individual in each class must not exceed three (3).
- Any one image may be entered in one class only and derivatives of that image may not be submitted as separate images in other classes.
- All photographs must be mounted singularly on black matting.  
Classes 12 – 22 must be 6" x 8" with mount 8" x 10"
- No glass or framed photographs.
- Mounts are to be marked on the **reverse** side with name, address, class number and title with an arrow to indicate the top of the photo.
- No hangers, tapes or Velcro to be attached to the mount please.
- Make sure the image is titled (on the back of mount).

### **10 – 17 year old**

<b>Class</b>	<b>Class</b>
12 Nature	17 Flora
13 Landscape	18 Creative
14 Macro	19 Show Scene
15 Monochrome	20 On the Farm
16 Portrait	21 Action Photo (must show some movement)

### **6, 7, 8 & 9 years**

<b>Class</b>
22 Any Subject Photo

**JUNIOR CHAMPION EXHIBIT Classes 12 – 22 Certificate & Sash**



**COFFS HARBOUR  
AGRICULTURAL SHOW**  
Celebrating 110 years

**NEW  
SECTION**

**LEGO®**

**AGES  
3 – ADULT**

**TOYWORLD**★

where the best toys come from



COFFS HARBOUR

## SECTION 8 LEGO



**ENTRY FEE – CHILDREN:** \$1.00    **ADULTS:** \$2.00

**EARLY LODGING OF ENTRIES:** Entries should be lodged as early as possible to assist the office staff.

**POST** ..... The Secretary, Coffs Harbour Show Society, PO Box 219, Coffs Harbour NSW 2450

**EMAIL** ..... [pavilionchshow@live.com](mailto:pavilionchshow@live.com) anytime

**SHOWGROUND** .... 8.00 - 5.00pm Monday 22nd April to Wednesday 24<sup>th</sup> (Look for sign)

**CLOSING DATE FOR ENTRY FORMS:** 5.00pm Wednesday 24<sup>th</sup> April, 2024

**EXHIBIT DROP OFF DATE:** 5.00pm Wednesday 24<sup>th</sup> April, 2024

**EXHIBIT PICKUP:** 4.00pm Sunday 28<sup>th</sup> April, 2024

**PRIZE MONEY:** Children – 1st \$3.00 2nd \$2.00    Adults – 1st \$6.00 2nd \$3.00 unless otherwise stated.

Prize money will only be awarded to 1<sup>st</sup> prize if 2 or more exhibits are entered in that class.

Prize money will only be paid to 2<sup>nd</sup> prize if 3 or more exhibits are entered in that class.

**All entries must be the bona fide work of exhibitor. Size 30cm x 30cm wide & up to 80cm high.**

**Boxed kit must accompanied by instructions.**

### Over 15 years, including Adults

#### **Class**

- 1 Boxed Kit
- 2 Freestyle construction

### 6 – 9 years old

#### **Class**

- 5 Boxed kit
- 6 Freestyle construction

### 10 – 14 years old

#### **Class**

- 3 Boxed Kit
- 4 Freestyle construction

### 3 – 5 years old Lego or Duplo

#### **Class**

- 7 Boxed Kit
- 8 Freestyle construction

Most Successful Exhibitor in Section 8

**CHAMPION EXHIBIT Classes 1 – 8**

# **SECTION 9 HONEY, MEAD, AND BEESWAX PRODUCTS**

**ENTRY FEE:** \$2.00

**EARLY LODGING OF ENTRIES:** Entry Forms should be lodged as early as possible to assist the office staff.

**POST** ..... The Secretary, Coffs Harbour Show Society, PO Box 219, Coffs Hbr NSW 2450

**EMAIL** ..... [pavilionchshow@live.com](mailto:pavilionchshow@live.com) anytime

**SHOWGROUND** .... Monday 22<sup>nd</sup> April to Wednesday 24<sup>th</sup> April 8.00am-5.00pm (Look for sign)

**CLOSING DATE FOR ENTRY FORMS:** 5pm Wednesday 24<sup>th</sup> April, 2024

**EXHIBIT DROP OFF DATE:** No later than 5pm Wednesday 24<sup>th</sup> April, 2024

**EXHIBIT PICKUP:** 4.00pm – 5.30pm Sunday 28<sup>th</sup> April, 2024

**PRIZE:** 1st \$10.00 2nd \$5.00 unless otherwise stated.

Prize money will only be awarded to 1<sup>st</sup> prize if 2 or more exhibits are entered in that class.

Prize money will only be paid to 2<sup>nd</sup> prize if 3 or more exhibits are entered in that class.

## **Entry Requirements and Judging**

**Exhibitors entering Honey and/or Beeswax block – Plain must be a registered beekeeper and your registration number is to be displayed at the top of your entry form.**

### **Honey – Liquid, Creamed and Candied Honey, and Chunk Honey**

1. Exhibitors are permitted to enter more than 1 entry per honey class, but each one must be obtained from a different floral source.
2. The honey submitted must have been harvested and bottled by the registered beekeeper from their hives.
3. The honey submitted must have been harvested and bottled within the last 18 months.
4. Honey must be presented for judging in a standard 500 gm (375 ml) round glass jar, with a white metal, or white plastic, screw top lid.
5. The jar of honey **MUST NOT** include any form of labelling or identifying feature.
6. Liquid Honey Exhibits will be **judged** against the standard points scales applying to honey products: flavour, density; colour; aroma; clearness, brightness.
7. Creamed and Candied Honey will be judged on evenness of grain; flavour; firmness; and colour.
8. Chunk Honey is liquid honey, containing a piece of comb honey from the same source. The piece of comb honey shall measure at least 40 mm x 110 mm). Chunk Honey will be judged on colour; comb appearance; flavour; and Clearness.

### **Beeswax Block – Plain**

1. All beeswax blocks are to have been rendered from raw unprocessed beeswax that has been sourced and cast by the entrant from their own hives.
2. Only pure unadulterated beeswax is to be used. No other waxes, oils, colourings or any other form of additive is to be used.
3. Beeswax blocks should be between 1 to 2 kg in weight.
4. Beeswax blocks are to square, round, oval or rectangular only.
5. Beeswax Blocks will be judged for colour; general appearance, aroma.

### **Beeswax Block – Moulded**

1. All moulded beeswax blocks are to have been cast by the entrant using either beeswax rendered by themselves, or using beeswax purchased from another party.
2. Only pure unadulterated beeswax is to be used. No other waxes, oils, colourings or any other form of additive is to be used.
3. Three (3) moulds are to be submitted as one entry. These may be identical or varied.
4. The moulds used are considered “fancy” moulds and can be of any shape or design.
5. These entries are not to be candles and should not include candle wick.
6. These entries may be any size, up to a maximum of 800 gms.
7. Moulded beeswax blocks will be judged on moulding and shaping; appearance, quality of wax



### **Beeswax Candles – rolled**

1. Rolled beeswax candles are to be made using sheets of beeswax foundation; or other sheet forms of beeswax, rolled around a wick.
2. Only pure unadulterated beeswax sheets are to be used. No other waxes, oils, colourings or any other form of additive are to be used.
3. Rolled beeswax candles can be any size or dimension, with a maximum weight of 600 gms
4. Beeswax Candles will be judged on appearance; burn response & wick; feel; ease of lighting; cleanliness.

### **Beeswax Candles – Moulded and Pillars**

1. Moulded and Pillar beeswax candles are to be cast with an appropriate wick and be able to sit freestanding on a plate, or supported in a candlestick.
2. Only pure unadulterated beeswax is to be used. No other waxes, oils, colourings or any other form of additive is to be used.
3. Moulded or Pillar candles can be any size or dimension, with a maximum weight of 800 gms
4. Moulded and Pillar Beeswax Candles will be judged on appearance; burn response & wick; feel; ease of lighting, cleanliness.

### **Beeswax Candles – Dipped**

1. Dipped candles are to be made from pure unadulterated beeswax. No other waxes, oils, colourings or any other form of additive are to be used.
2. Dipped candles can be any size or dimension, with a maximum weight of 400 gms
3. Dipped Beeswax Candles will be judged on appearance; burn response & wick; feel; ease of lighting, cleanliness

### **Beeswax Candles - Coloured, Decorated or Painted**

1. Coloured, decorated or painted candles are to be made from pure beeswax. Colour and adornments may be used in the wax, or applied to the wax.
2. Decorative Candles will be judged on appearance; burn response & wick; feel; ease of lighting, cleanliness.

### **Product Labels - Honey and Mead**

1. Two labels must be presented. One is to be affixed to the product it has been designed for, the other label is to be provided as a flat unattached label.
2. Labels will be judged on design; visual appeal; compliance with labelling requirements for mead and honey respectively; and how well it compliments the packaging and the product.

### **Honey Mead**

1. All persons entering Mead are to have brewed the mead themselves within the last 18 months, and be over the age of 18 years old at the time of brewing.
2. The Mead is honey mead and must contain honey.
3. The Mead will be judged on flavour; aroma; appearance; mouthfeel.
4. NOTE: The size and shape of the bottle used for mead will not be taken into account for judging this year.

## HONEY, MEAD AND BEESWAX PRODUCTS

Class	Qty	Class	Qty		
1	Liquid Honey	2	3	Chunk Honey	2
2	Candied Honey	2	4	Creamed Honey	2
5	<b>Champion (Classes 1 to 4) *</b>				
	*\$20 Gift Certificate donated by Coffs Beekeeping Supplies				

### Candles

Class	Qty	Class	Qty		
6	Rolled Candles	2	9	Dipped Candles	2
7	Pillar Candles	2	10	Coloured, Decorated, or Painted Candles	2
8	Moulded Candles	2			
11	<b>Champion (Classes 6 to 10) *</b>				
	*\$20 Gift Certificate donated by Coffs Beekeeping Supplies				

### Beeswax

Class	Qty	Class	Qty		
12	Beeswax block – moulded	3	13	Beeswax Blocks	1
14	<b>Champion (Classes 12 to 13) *</b>				
	*\$20 Gift Certificate donated by Coffs Beekeeping Supplies				

### Product Labels – Honey and Mead

Class	Qty	
15	Honey and Mead Labels	2

### Mead

Class	Qty	
16	Mead	1
17	<b>Champion Mead *</b>	
	*\$20 Gift Certificate donated by Coffs Beekeeping Supplies	

### Schools

Class	Qty	
18	Liquid Honey any colour	1

**Class 19 Champion Exhibit Classes 1 – 4 & 18 Perpetual Shield, Certificate, Sash**

**Most Successful Overall Exhibitor in Section 9 \$20 Gift Certificate donated by Coffs Beekeeping Supplies**

Sponsors

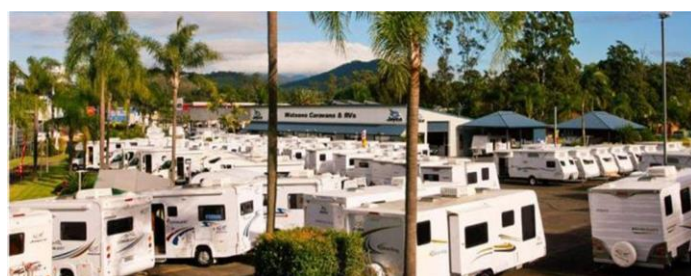


**Amateur  
Beekeepers  
Australia**

Mid North Coast Branch



6 North Boambee Rd, Coffs Harbour NSW 2450  
 PH: [02 6652 7544](tel:0266527544)  
 Email: [info@watsonslisurecentre.com.au](mailto:info@watsonslisurecentre.com.au)



# Special Thanks to Our Wonderful Sponsors

**Rex's Car Wash** – Bailey Centre Coffs Harbour  
Email: [gavinhollins@hotmail.com](mailto:gavinhollins@hotmail.com)

**Coffs Harbour City Locksmith** – 40 Marcia Street Coffs Harbour  
Ph: 6651 1336 Email: [info@chclocksmith.com.au](mailto:info@chclocksmith.com.au)

**Pat's Mower Service** – 2/8 Marcia Street Coffs Harbour  
Ph: 6651 1743 Email: [patsmowerservice@hotmail.com](mailto:patsmowerservice@hotmail.com)

**Morrison's Betta Home Living** – 3 Gerard Drive Coffs Harbour  
Ph: 6652 8062 Email: [morrison@my.betta.com.au](mailto:morrison@my.betta.com.au)

**It's A Matter Of Money** – PO Box 1069 Coffs Harbour  
Ph: 5626 5377 Mob: 0417 462 273 Email: [jared@itsamatterofmoney.com](mailto:jared@itsamatterofmoney.com)

**Jax's Tyres** – 58 Grafton Street Coffs Harbour  
Ph: 652 7999 Email: [coffsharbour@jax.com.au](mailto:coffsharbour@jax.com.au)

**The Clog Barn** – 215 Pacific Highway Coffs Harbour  
Ph: 6652 4633 Email: [enquiries@clogbarn.com.au](mailto:enquiries@clogbarn.com.au)

**Equity Real Estate** – 7a 30 Orlando Street Coffs Harbour  
Mob: 0481 093 299 Email: [vanessa@equityfirstrealestate.com.au](mailto:vanessa@equityfirstrealestate.com.au)

**Stitches By The Sea** – 10 Gundagai Street Coffs Harbour  
Mob: 0412 355 438 Email: [infostitchesbythesea@gmail.com.au](mailto:infostitchesbythesea@gmail.com.au)

**Cook Drive Smash Repairs** – 16 Cook Drive Coffs Harbour  
Ph: 6652 4122 Email: [info@cookdrivesmash.com.au](mailto:info@cookdrivesmash.com.au)

**Win's Thai Kitchen** – 2/44 Moonee Street Coffs Harbour  
Ph: 6652 8900

**Coffs Harbour Newsagency** – 92-98 Harbour Drive Coffs Harbour  
Ph: 6652 1512 Email: [coffsnews@gmail.com](mailto:coffsnews@gmail.com)

**Creative Sewing Centre** – 268 Beryl Street Coffs Harbour  
Ph: 6652 1863 Email: [creativesew2@gmail.com](mailto:creativesew2@gmail.com)

**The Paper Boys** – 8/9 GDT Seccombe Close Coffs Harbour  
Ph: 6651 2799 Email: [sales@thepaperboys.com.au](mailto:sales@thepaperboys.com.au)

**TJM Troy Johnstone Motors** – 1 June Street Coffs Harbour  
Ph: 6652 4501 Email: [tjohnstonemotors@gmail.com](mailto:tjohnstonemotors@gmail.com)

**C.ex Coffs Camera Club**  
Email – [c.ex\\_camera\\_club@hotmail.com](mailto:c.ex_camera_club@hotmail.com)

## SECTION 10 FRESH PRODUCE

**ENTRY FEE:** \$2.00

**EARLY LODGING OF ENTRIES:** Entries should be lodged as early as possible to assist the office staff.

**POST** ..... The Secretary, Coffs Harbour Show Society, PO Box 219, Coffs Harbour NSW 2450

**EMAIL** ..... [pavilionchshow@live.com](mailto:pavilionchshow@live.com) anytime

**SHOWGROUND** .... Monday 22<sup>nd</sup> April to Wednesday 24<sup>th</sup> April 8.00am-5.00pm (Look for sign)

**CLOSING DATE FOR ENTRY FORMS:** 5.00pm Wednesday 24<sup>th</sup> April, 2024

**EXHIBIT DROP OFF DATE: NO** later than 9.00am Friday 26<sup>th</sup> April, 2024

**EXHIBIT PICKUP:** 4.00pm Sunday 28<sup>th</sup> April, 2024

**PRIZE MONEY:** 1st \$6.00 2nd \$3.00 unless otherwise stated. Most Successful Exhibitor \$50

Prize money will only be awarded to 1<sup>st</sup> prize if 2 or more exhibits are entered in that class.

Prize money will only be paid to 2<sup>nd</sup> prize if 3 or more exhibits are entered in that class.

- The Stewards reserve the right not to exhibit any item offered for exhibition.
- Commercial growers are not eligible to compete in the fresh produce classes.
- All exhibits must be grown or produced personally by the exhibitor.

### Eggs

Do not wash eggs as this removes their natural bloom, gently brush to clean. Display in a clean undamaged carton.

### Fruit

Fruit exhibits to be displayed with stems attached, with the exception of citrus fruits stems which are to be cut close to the surface of the rind leaving green plump sepals.

### Vegetables

A sample cut may be necessary for judging purposes, with the exception of pumpkins.



- Domestic Locksmiths
- Commercial Locksmiths
- Auto Locksmiths
- Security Locksmiths
- Safes

**11/41 Industrial Drive North Boambee Valley**

**Ph: 6652 6201**

**Email: [accounts@cclockmart.com.au](mailto:accounts@cclockmart.com.au)**

## SECTION 10 FRESH PRODUCE

### Eggs & Nuts

Class	Qty	Class	Qty
1 Hen Eggs.....	6	3 Nuts, unshelled any variety.....	4
2 Duck Eggs.....	3		

### Fruit

Class	Qty	Class	Qty
4 Australian Native Fruit..... (Bush Tucker)	3	7 Mandarin, any variety.....	3
5 Jam/Pie Melon with stalk, any variety.....	3	8 Orange, any variety.....	3
6 Lemon, any variety.....	3	9 Passionfruit, any variety.....	3
		10 Paw Paw, any variety.....	1
		11 Fruit not mentioned.....	3

### **Champion Eggs, Nuts or Fruit Exhibit Classes 1 – 11**

### Vegetables

Class	Qty	Class	Qty
13 Asian Vegetables, any variety.....	2	21 Silverbeet, leaves, variety.....	4
14 Avocado, any variety.....	3	22 Squash, with stalk, any variety.....	1
15 Carrot, with tops, one variety.....	3	23 Tomato, Green, with stalk, any variety.....	3
16 Chillies, any variety.....	5	24 Tomato, ripe, with stalk any variety.....	3
17 Choko, Green or White with stalk.....	2	25 Zucchini, with stalk, any variety.....	3
18 Garlic, any variety, knobs.....	3	any variety.....	3
19 Lettuce, with roots, any variety.....	1	26 Vegetable not mentioned.....	3
20 Pumpkin, Gramma or Butternut, with stalk.....	1		

### COLLECTION: 5 different varieties or herbs, fruits or herbs.

Class	
27 Collection of Cut Herbs	29 Collection of Vegetables
28 Collection of Fruit	

# SECTION 10 FRESH PRODUCE

## School Vegie Box

An emphasis on SUSTAINABILITY OR RECYCLING is preferred. Exhibit will be judged on quality of produce and presentation. School is to supply laminated signage no larger than A5 with the School's name – to be displayed after judging.

### Class

- 30 Primary Schools** Vegie Garden Box or basket (not exceeding 50cm square) of produce comprising five different varieties of vegetables from school's own garden.
- 31 High Schools** Vegie Garden Box or basket (not exceeding 50cm square) of produce comprising five different varieties of vegetables from school's own garden.

**CHAMPION EXHIBIT** Exhibit 1 – 31 Certificate & Sash

**Grand Champion Vegetable Exhibit** 1 – 31

Most Successful Exhibitor in Section 10 *Sponsored by* Pat's Mower Service



**COFFS HARBOUR  
AUTOMOTIVE**

**SERVICES • REGO  
TYRES • BRAKES  
WHEEL ALIGNMENTS  
TRANSMISSIONS • DIFFS**

**OFFICE**

**FEDERAL**

**COFFS HARBOUR  
AUTOMOTIVE**  
TUNE UP  
TYRES  
ALIGNMENTS  
BRAKES & CLUTCH  
TRANSMISSIONS  
DIFF SERVICING  
REGO CHECKS  
66517004

- All Mechanical Repairs
- Pink & Blue Slips
- Auto Transmission
- Brake & Clutch Repairs
- Wheel Alignment
- Tyres
- Manuals & Diffs
- Air Con Servicing
- Handbook Servicing

**FALKEN  
TYRES**

**WILDPEAK AIT AT3W**

**MTA** **e**  
**efitpos**

37 Lawson Cres,  
Coffs Harbour NSW 2450

**Contact Us Today**

Ph: 6651 7004

## SECTION 11 – HEAVIEST BANANA BUNCH

**ENTRY FEE:** \$2.00

**EARLY LODGING OF ENTRIES:** Entries should be lodged as early as possible to assist the office staff.

**POST** ..... The Secretary, Coffs Harbour Show Society, PO Box 219, Coffs Harbour NSW 2450

**EMAIL** ..... [pavilionchshow@live.com](mailto:pavilionchshow@live.com) anytime

**SHOWGROUND** .... 8.00 - 5.00pm Monday 22nd April to Wednesday 24<sup>th</sup> (Look for sign)

**CLOSING DATE FOR ENTRY FORMS:** 5.00pm Wednesday 24<sup>th</sup> April, 2024

**EXHIBIT PICKUP:** 4.00pm Sunday 28<sup>th</sup> April, 2024

### HEAVIEST MARKETABLE BUNCH

3 Varieties – 3 \$200 Prizes

Class 1 : Cavendish

Class 2: Ducasse

Class 3. Lady Finger

Weigh In: 8.00am – 9.30am  
Friday 26<sup>th</sup> April 2024

Contact: Jeff Eggins 0409 318 175  
Wal Gately 0419 660 175

The display and provision of prize money has been provided by the  
***Coffs Harbour & District Banana Growers Association***  
and  
***The Bushfire and Hail Insurance Fund***

# SECTION 12 FLOWERS & PLANTS

**ENTRY FEE:** \$2.00

**EARLY LODGING OF ENTRIES:** Entries should be lodged as early as possible to assist the office staff.

**POST** ..... The Secretary, Coffs Harbour Show Society, PO Box 219, Coffs Harbour NSW 2450

**EMAIL** ..... [pavilionchshow@live.com](mailto:pavilionchshow@live.com) anytime

**SHOWGROUND** .... 8.00 - 5.00pm Monday 22nd April to Wednesday 24<sup>th</sup> (Look for sign)

**CLOSING DATE FOR ENTRY FORMS:** 5.00pm Wednesday 24<sup>th</sup> April, 2024

**EXHIBIT DROP OFF DATE: NO** later than 9.00am Friday 26<sup>th</sup> April, 2024

**EXHIBIT PICKUP:** 4.00pm Sunday 28<sup>th</sup> April, 2024

**PRIZE MONEY:** 1st \$6.00 2nd \$3.00 unless otherwise stated. Most Successful Exhibitor \$50

Prize money will only be awarded to 1<sup>st</sup> prize if 2 or more exhibits are entered in that class.

Prize money will only be paid to 2<sup>nd</sup> prize if 3 or more exhibits are entered in that class.

## Cut Flowers

Judges are looking for what is typical of the flower or plant, free from disease, insect or other damage, clean and fresh. Judges may, at their discretion, award 1<sup>st</sup> and/or 2<sup>nd</sup>, and/or make Highly Commended Awards. Judges also have the discretion to make no prize or award in a Class if, in their opinion, there is no exhibit in that Class worthy of a prize or award.

All plant material must have been grown by the exhibitor. All plants must have been in the exhibitor's possession for at least 90 days prior to show. Please label exhibits. This is important as the purpose of a Show is education as well as competition and other exhibitors and the public may be interested in growing varieties that have been exhibited. If unknown, write on exhibit tag 'Name Wanted Please' and there may be someone who can assist you in naming that exhibit. For pots both the scientific name and common name is desired. In the Bonsai Classes, the age of the Exhibit should be included with the name.

There are bottles provided (soft drink bottles); however, you may use a container of your own choice. This container **must** be of clear glass for the cut flower classes. Specimen flowers must have their own stem and foliage. No stems longer than 70cm please. Pack the stem in the bottle neck using kitchen towel or oasis so that the stem is held firm for judging and display purposes.

Foliage plants are judged on the quality and appearance of leaves and stems. Flowering plants are judged for their display of flowers but should not show obvious foliage damage. Do not put oil on leaves of plants, leaves should be cleaned of all dirt but not coated in anything.



PROUDLY CARING FOR THE FAMILIES OF  
THE COFFS COAST FOR OVER 25 YEARS.

*Whether it's to arrange a fitting farewell for a loved one,  
or time to plan ahead - come and speak with us.*

132 WEST HIGH STREET, COFFS HARBOUR

funeralcoffsharbour.com.au  
24 hours, 7 days:

Phone: 66515007

VICTOR RULLIS  
& FAMILY FUNERALS  
Honouring Memories, Cherishing Lives.  
Incorporating  
LAVENDER  
ROSE  
FUNERALS



# SECTION 12 FLOWERS & PLANTS

## Cut Flowers

Please note the following horticultural terms:

**NND:** (not necessarily distinct) two or more blooms may be the same variety or cultivar.

**COLLECTION:** means 5 DISTINCT.

**DISTINCT:** each bloom or foliage must be of a different variety or cultivar.

Class	Class
1 Annual, 3 stems	13 Rose, not otherwise mentioned, 1 cut
2 Australian Native, 1 cut	14 Roses, floribunda, vase, 3 cuts
3 Australian Native, vase 5 cuts, NND	15 Roses, miniature, vase, 3 cuts
4 Australian Natives, collection	16 Rose, not otherwise mentioned, 3 cuts
5 Azalea, any colour, 1 cut	17 Salvia, any variety, 1 cut
6 Camellia, 1 cut	18 Salvia, vase, 5 cuts NND
7 Camellia, sasanqua, in float bowl	19 Strelitzia (Bird of Paradise), 1 stem
8 Chrysanthemums, 3 cuts	20 Cut flowers, collection
9 Orchid, any variety, 1 stem	21 Foliage, vase, collection
10 Pentas, any colour, 3 cuts NND	22 Shrubs in flower, collection
11 Rose, 1 bud on stem	23 White flowers, 5 cuts NND
12 Rose, Floribunda, 1 cut	24 Bloom or Bract not otherwise mentioned

**Champion Exhibit of Show Cut Flowers, Classes 1 – 24 Certificate & Sash**

## Decorative

Exhibits are judged on interpretation of schedule, creativity, originality, principles and elements of design. Plant material should predominate over all components in a design. Entries must be the exhibitors own work.

All Classes in Decorative have a **maximum bench space allowance of 40cm** unless otherwise indicated. Fresh plant material need not necessarily be grown by Exhibitor in Decorative. All floral material must be 'fresh' in water or water storage medium or be self-sufficient plant material (e.g. cacti, succulent, fruit or vegetables) unless otherwise indicated.

### **Class**

- 26 Arrangement for a Special Occasion with the occasion named.
- 27 Flowers with fruit and/or vegetables
- 28 'A Petite Arrangement'. Scale is the most important principal. All material (including container) must be in the same proportion. More than 10cm but less than 25cm overall.

**Champion Exhibit of Show, Decorative, Classes 26 – 28 Certificate & Sash**

# SECTION 12 FLOWERS & PLANTS

## Professional Florist Competition

Perpetual Trophy and \$50, 2<sup>nd</sup> \$30 and 3<sup>rd</sup> \$15

### Class

#### **30 Professional Florists Competition**

An arrangement of fresh flowers and plant materials, theme Heritage Piece  
Your finished design may include embellishments but is to be predominantly horticultural materials. Bench space allowed 850mm square on black.

#### **Community Floral Display – NON-COMPETITIVE**

An arrangement of fresh and/or dried flowers and plant material. Theme Vivacious Blooms

## Plants

**Please note the following horticultural terms:**

**NND:** (not necessarily distinct) two or more plants may be the same variety or cultivar.

**COLLECTION:** means 5 DISTINCT.

**DISTINCT:** each plant or foliage must be of a different variety or cultivar.

### Class

### Class

- |  |   |
|--|---|
| <b>31</b> Andiantum (Maiden Hair Fern)                           | <b>44</b> Mixed variety in one pot                    |
| <b>32</b> African Violet, single or double                       | <b>45</b> Most unusual plant                          |
| <b>33</b> Anthurium  | <b>46</b> Orchid, any variety, in flower              |
| <b>34</b> Begonia  | <b>47</b> Palm, indoor                                |
| <b>35</b> Bonsai, any style                                      | <b>48</b> Pepperomia, any variety                     |
| <b>36</b> Bromeliad  | <b>49</b> Philodendron, any variety                   |
| <b>37</b> Bromeliad, display piece                               | <b>50</b> Sansevieria (Mother-in-law's tongue)        |
| <b>38</b> Cactus, any variety                                    | <b>51</b> Spathiphyllum (Peace Lily)                  |
| <b>39</b> Cactus, best dish/container                            | <b>52</b> Succulent, any variety                      |
| <b>40</b> Coleus, any variety                                    | <b>53</b> Succulent, best dish/container, any variety |
| <b>41</b> Fern, any variety                                      | <b>54</b> Syngonium, any variety                      |
| <b>42</b> Foliage e.g. Dieffenbachia, Aglenoma,<br>Caladium etc. | <b>55</b> Zygocactus, in flower                       |
| <b>43</b> Hanging basket/pot                                     | <b>56</b> Flowering plant not mentioned               |
|  | <b>57</b> Plant not mentioned                         |

**CHAMPION EXHIBIT Classes 31 – 57** Certificate & Sash

**GRAND CHAMPION Exhibit Classes 1 – 24, 26 – 28, 31 - 57**

**Most Successful Exhibitor in Section 12** *Sponsored by* TJM Troy Johnstone Motors

## **SECTION 14 PAPER CRAFT**

**ENTRY FEE:** \$2.00

**EARLY LODGING OF ENTRIES:** Entries should be lodged as early as possible to assist the office staff.

**POST** ..... The Secretary, Coffs Harbour Show Society, PO Box 219, Coffs Harbour NSW 2450

**EMAIL** ..... [pavilionchshow@live.com](mailto:pavilionchshow@live.com) anytime

**SHOWGROUND** .... 8.00 – 5.00pm Monday 22<sup>nd</sup> April to Wednesday 24<sup>th</sup> April (Look for sign)

**CLOSING DATE FOR ENTRY FORMS:** 5.00pm Wednesday 24<sup>th</sup> April, 2024

**EXHIBIT DROP OFF DATE:** By 5.00pm Wednesday 24<sup>th</sup> April, 2024

**EXHIBIT PICKUP:** 4.00pm Sunday 28<sup>th</sup> April, 2024

**PRIZE MONEY:** 1st \$6.00 2nd \$3.00 unless otherwise stated. Most Successful Exhibitor \$50

Prize money will only be awarded to 1<sup>st</sup> prize if 2 or more exhibits are entered in that class.

Prize money will only be paid to 2<sup>nd</sup> prize if 3 or more exhibits are entered in that class.

**All entries must be the bona fide work of exhibitor and been completed in the last three years.**

Steward or Judge has the discretion to move an article to another class if it is incorrectly entered.

### **Paper Tole**

#### **Class**

- 1 Paper Tole Framed picture

### **Scrapbooking**

SINGLE OR DOUBLE PAGE 30cm x 30cm – OPEN CLASS

#### **Class**

- 2 Babies or Children  
3 Animals or Pets  
4 Holidays or Travel  
5 Special Event

#### **Class**

- 6 Off the Page  
7 Mixed Media  
8 Journal/Diary  
9 Any other Subject

**CHAMPION EXHIBIT Classes 1 – 9 Certificate & Sash**

### **Card Making**

All cards must have inserts.

Cards **not** to be in bags

#### **Class**

- 20 Stamping  
21 Embossing  
22 Christmas Card  
23 Birthday Card

#### **Class**

- 24 Die Cutting  
25 Mixed Media  
26 Any other Subject

**CHAMPION EXHIBIT Classes 20 – 26 Certificate & Sash**

**GRAND CHAMPION EXHIBIT Classes 1 – 26**

**Most Successful Exhibitor in Section 14** *Sponsored by* Coffs Harbour Newsagency

**Email entries to: [pavilionchshow@live.com](mailto:pavilionchshow@live.com)**

## SECTION 17 CRAFT WORK

**ENTRY FEE:** \$2.00

**EARLY LODGING OF ENTRIES:** Entries should be lodged as early as possible to assist the office staff.

**POST** ..... The Secretary, Coffs Harbour Show Society, PO Box 219, Coffs Harbour NSW 2450

**EMAIL** ..... [pavilionchshow@live.com](mailto:pavilionchshow@live.com) anytime

**SHOWGROUND** .... 8.00 – 5.00pm Monday 22<sup>nd</sup> April to Wednesday 24<sup>th</sup> April (Look for sign)

**CLOSING DATE FOR ENTRY FORMS:** 5.00pm Wednesday 24<sup>th</sup> April, 2024

**EXHIBIT DROP OFF DATE:** By 5.00pm Wednesday 24<sup>th</sup> April, 2024

**EXHIBIT PICKUP:** 4.00pm Sunday 28<sup>th</sup> April, 2024

**PRIZE MONEY:** 1st \$6.00 2nd \$3.00 unless otherwise stated. Most Successful Exhibitor \$50

Prize money will only be awarded to 1<sup>st</sup> prize if 2 or more exhibits are entered in that class.

Prize money will only be paid to 2<sup>nd</sup> prize if 3 or more exhibits are entered in that class.

**All entries must be the bona fide work of exhibitor and been completed in the last two years.**

<b>Class</b>		<b>Class</b>	
<b>1</b>	Metalwork – small article	<b>14</b>	Novelty Pin Cushion
<b>2</b>	Woodwork – small article	<b>15</b>	Diamond Art – Framed – No bigger than 50cm x 40cm
<b>3</b>	Folk Art Item	<b>16</b>	Diamond Art Article - Small
<b>4</b>	Leatherwork article	<b>17</b>	Beaded Jewellery Article
<b>5</b>	Article made for less than \$10	<b>18</b>	Any Beaded article not mentioned
<b>6</b>	Article of clothing hand dyed	<b>19</b>	Article of craft made by a person over 70yrs
<b>7</b>	Wall hanging	<b>20</b>	Article made by a person with a disability
<b>8</b>	Christmas Article	<b>21</b>	Article not mentioned
<b>9</b>	Spinning Skeins, pure wool	<b>22</b>	Novice – any article by someone who has never entered Coffs Harbour Ag. Show
<b>10</b>	Spinning Skeins, any fibre other than wool	<b>23</b>	ASC Wool Article / Garment. Royal Easter Show State competition. See details page 26
<b>11</b>	Spun yarn handmade article		
<b>12</b>	Hand woven article		
<b>13</b>	Felting – Any Felting Method		

**CHAMPION EXHIBIT – Classes 1 – 23** Certificate & Sash

**GRAND CHAMPION EXHIBIT** Classes 1 – 23

**Most Successful Exhibitor in Section 17** *Sponsored by* Coffs Harbour Picture Framing

# WOOL ARTICLE/GARMENT

## ROYAL EASTER SHOW STATE COMPETITION

### Competition to be conducted at Society, Group & State Level

#### Class

#### 29 THREE DIFFERENT TYPES OF WOOL ARTICLES AND/OR GARMENTS

##### CONDITIONS:

- For the purpose of this competition the following definitions apply:
  - Garment: an item that can be worn e.g. dress, jacket, scarf, hat
  - Article: a utility item that is not worn but can be used in the home  
e.g. blanket; with an outfit e.g. bag; for amusement  
e.g. toy; as a decoration e.g. picture etc.
  - Three Different Types: the 3 items in an entry must differ from each other in terms of their construction technique and/or their purpose  
e.g..1 a knitted jumper, blanket and tea cosy OR  
e.g..2 a knitted tea cosy, a crocheted tea cosy or a felted tea cosy OR  
e.g..3 a knitted jumper, a knitted blanket and a crocheted blanket.
- The whole article and/or garment must be constructed of, and contain a minimum of, 80% wool.
- Exhibits (articles/garments) may be knitted, crocheted, sewn, felted etc. and must be hand crafted (use of sewing machine is permitted).
- A sample of the yarn, fabric or fibre with label must be attached to each item making up the exhibit. If a label is not available such as in the case of a hand spun or felted item, a handwritten label with relevant details and sample will suffice."
- An exhibit in this competition may consist of the work of one individual or a group of individuals, or an organization.
- All three article/garments must have been completed within the 12 months prior to the local show and made by the exhibitor/s.
- An exhibit having won at a local show may be exhibited (the same three article/garments) at the Group Final. The winning exhibit at the Group Final is then eligible to compete in the State Final.
- An exhibit is only eligible to represent one Society at Group level and one Group at State level.
- An exhibit (article/garment) that has previously competed at Group level is not eligible to compete again.
- If this class is not scheduled or attracts no entries at a local show, the Chief Pavilion Steward in consultation with the appropriate Pavilion Section Judges, may select three suitable individual exhibits and, with the exhibitors permission, enter them in the Group judging as an exhibit representing the particular Society concerned.
- It is the responsibility of the Group Secretary and winner to co-ordinate the transfer of the winning entry to the ASC Office in Sydney for the State judging.



**WILK**  
CONSTRUCTION CO.

**WE GET THE JOB DONE!**

BUILDING TRUST  
WITH QUALITY WORK

Ph: 0400 922 725 Email: [WILKConstructions@gmail.com](mailto:WILKConstructions@gmail.com)

**Email entries to: [pavilionchshow@live.com](mailto:pavilionchshow@live.com)**

# SECTION 18 KNITTING & CROCHET

**ENTRY FEE:** \$2.00

**EARLY LODGING OF ENTRIES:** Entries should be lodged as early as possible to assist the office staff.

**POST** ..... The Secretary, Coffs Harbour Show Society, PO Box 219, Coffs Harbour NSW 2450

**EMAIL** ..... [pavilionchshow@live.com](mailto:pavilionchshow@live.com) anytime

**SHOWGROUND** .... 8.00 – 5.00pm Monday 22<sup>nd</sup> April to Wednesday 24<sup>th</sup> April (Look for sign)

**CLOSING DATE FOR ENTRY FORMS:** 5.00pm Wednesday 24<sup>th</sup> April, 2024

**EXHIBIT DROP OFF DATE:** By 5.00pm Wednesday 24<sup>th</sup> April, 2024

**EXHIBIT PICKUP:** 4.00pm Sunday 28<sup>th</sup> April, 2024

**PRIZE MONEY:** 1st \$6.00 2nd \$3.00 unless otherwise stated. Most Successful Exhibitor \$50

Prize money will only be awarded to 1<sup>st</sup> prize if 2 or more exhibits are entered in that class.

Prize money will only be paid to 2<sup>nd</sup> prize if 3 or more exhibits are entered in that class.

**All entries must be the bona fide work of exhibitor and completed in the last 2 years.**

## **Judging Hints:**

- Presentation of work is most important e.g. clean garments or articles.
- Mounted if schedule allows – i.e. doilies. Small articles.
- Cushions stuffed in the corners and firm enough to be comfortable.
- The garment must have no loose threads. Neatly sewn in the seams, no gaps in seams.
- All joints always be at the seams – Keep seams flat. Knots are not allowed ever.

**NB. See page 26 for:**

**ASC WOOL ARTICLE/GARMENT ROYAL EASTER SHOW STATE COMPETITION (Mid North Coast Group of Agricultural Societies)** Three different types of wool articles and/or garments, minimum 80% wool.

## **Crochet**

<b>Class</b>		<b>Class</b>	
1	Doiley or table centre	6	Hand Spun Yarn – Crochet article
2	Baby or Child's any garment	7	Rug over 75cm
3	Hand towel or Face Washer – Crochet edge	8	Coat Hanger
4	Scarf/Shawl	9	Article both knitting and crochet
5	Crochet article incorporating beads	10	Article made by person 70 years and over
		11	Article not mentioned

**Novice Crochet**      **Class 12** Any item – Competitor has never won at a show before

**CHAMPION EXHIBIT** Classes 1 – 11 Certificate & Sash

## **Knitting**

<b>Class</b>		<b>Class</b>	
14	Jumper or cardigan	20	Hand Spun Yarn Knitted article
15	Baby or Child's Garment	21	Coat Hanger
16	Toy or Novelty Item	22	Scarf/Shawl
17	Socks or Slippers	23	Article made by a person 70 years and over
18	Article incorporating beads	24	Article not mentioned
19	Beanie, Hat or Cap	25	ASC Wool Article / Garment. Royal Easter Show State competition. See details page 26

**Novice Knitting**      **Class 26** Any item – Competitor has never won at a show before

**CHAMPION EXHIBIT** Classes 14 – 25 Certificate & Sash

**GRAND CHAMPION** Classes 1 - 26

**Most Successful Exhibitor** in Section 18 *Sponsored by* Stitches By The Sea

## SECTION 19 NEEDLEWORK

**ENTRY FEE:** \$2.00

**EARLY LODGING OF ENTRIES:** Entries should be lodged as early as possible to assist the office staff.

**POST** ..... The Secretary, Coffs Harbour Show Society, PO Box 219, Coffs Harbour NSW 2450

**EMAIL** ..... [pavilionchshow@live.com](mailto:pavilionchshow@live.com) anytime

**SHOWGROUND** .... 8.00 – 5.00pm Monday 22<sup>nd</sup> April to Wednesday 24<sup>th</sup> April (Look for sign)

**CLOSING DATE FOR ENTRY FORMS:** 5.00pm Wednesday 24<sup>th</sup> April, 2024

**EXHIBIT DROP OFF DATE:** By 5.00pm Wednesday 24<sup>th</sup> April, 2024

**EXHIBIT PICKUP:** 4.00pm Sunday 28<sup>th</sup> April, 2024

**PRIZE MONEY:** 1st \$6.00 2nd \$3.00 unless otherwise stated. Most Successful Exhibitor \$50

Prize money will only be awarded to 1<sup>st</sup> prize if 2 or more exhibits are entered in that class.

Prize money will only be paid to 2<sup>nd</sup> prize if 3 or more exhibits are entered in that class.

**All entries must be the bona fide work of exhibitor and been completed in the last two years.**

Maximum Size for framed work 40cm

Stewards or Judge has the discretion to move an article to another class if it is incorrectly entered.

Class		Class	
1	Hand Embroidered Article	5	Cross Stitch
2	Wool Embroidery	6	Article made by person 70 years and over
3	Tapestry	7	Article not mentioned
4	Bags, Hand Bags & Shoulder Bags		

**CHAMPION EXHIBIT** Classes 1 – 7 Certificate & Sash

**GRAND CHAMPION** Classes 1 - 7

**Most Successful Exhibitor** in Section 19 *Sponsored by* Stitches By The Sea

**Email entries to: [pavilionchshow@live.com](mailto:pavilionchshow@live.com)**

## SECTION 20 PATCHWORK, APPLIQUE AND QUILTING

**ENTRY FEE:** \$2.00

**EARLY LODGING OF ENTRIES:** Entries should be lodged as early as possible to assist the office staff.

**POST** ..... The Secretary, Coffs Harbour Show Society, PO Box 219, Coffs Harbour NSW 2450

**EMAIL** ..... [pavilionchshow@live.com](mailto:pavilionchshow@live.com) anytime

**SHOWGROUND** .... 8.00 – 5.00pm Monday 22<sup>nd</sup> April to Wednesday 24<sup>th</sup> April (Look for sign)

**CLOSING DATE FOR ENTRY FORMS:** 5.00pm Wednesday 24<sup>th</sup> April, 2024

**EXHIBIT DROP OFF DATE:** By 5.00pm Wednesday 24<sup>th</sup> April, 2024

**EXHIBIT PICKUP:** 4.00pm Sunday 28<sup>th</sup> April, 2024

**PRIZE: PRIZE MONEY:** 1st \$6.00 2nd \$3.00 unless otherwise stated. Most Successful Exhibitor \$50

Prize money will only be awarded to 1<sup>st</sup> prize if 2 or more exhibits are entered in that class.

Prize money will only be paid to 2<sup>nd</sup> prize if 3 or more exhibits are entered in that class.

All entries must be the bona fide work of exhibitor and been completed in the last two years. The quilt must be the makers own work, including piecing, quilting and binding. Acknowledgement must be made of any work done by a professional Quilter and or designer.

Work must be recognizable as quilts and must be made primarily of layers of fabric and wadding held together by stitches distributed throughout the quilt.

All Quilts must have a Quilt Hanger attached.

Stewards or Judge has the discretion to move an article to another class if it is incorrectly entered.

### Class

- 1 Quilt Hand Pieced or hand quilted
- 2 Quilt Hand Quilted
- 3 Quilt: Machine sewn
- 4 Quilt: mixed techniques
- 5 Appliqued Quilt

### Class

- 6 Small Quilt or Wall Hanging: Max 1m x 1.3m
- 7 Any article not mentioned
- 8 ASC Patchwork Quilt Competition –  
Rules & regulations on page 30

**CHAMPION EXHIBIT** Classes 1 – 8 Certificate & Sash

**GRAND CHAMPION** Classes 1 - 8

**Most Successful Exhibitor** in Section 20 *Sponsored by* Coffs Quilters & Needlecraft Inc.

### *Coffs Quilters & Needlecraft Inc.*

*Thursday 9.00am – 12.00 noon*

*Cavanbah Hall Coffs Harbour*



*Patchwork*

*Quilting*

*Knitting*

*Crochet*

*Embroidery*

*Any Fibrecraft welcome*

Secretary Mob: 0408 651 839

Email: [cqan1989@gmail.com](mailto:cqan1989@gmail.com)



# PATCHWORK QUILT GROUP COMPETITION

## Rules & Regulations

*\*This new competition is currently open to all shows and groups to adopt.*

*\*\*\* If group support is sufficient the RAS will be invited to conduct a State Final starting 2022*

1. The exhibit is to be not more than one metre on any one side (rectangle or square shape only)
2. Framed and board mounted exhibits not permitted.
3. Must be machine pieced and machine quilted.
4. Minimal Embellishments. Small amount only not to overpower patchwork.
5. Each exhibit entered must be the bona fide work of the exhibitor.
6. An exhibit having won at a Show will compete at a Group Final.
7. An exhibit is only eligible to represent one Society at Group level and one Group at State level
8. If, for any reason, a winner is unable to compete at Group level then the second place getter is eligible to compete.
9. All work to have been completed in the last eighteen (18) months prior to its entry at a local show.
10. An exhibit that has previously competed at Group level is not eligible to compete again.
11. If this class is not scheduled or attracts no entries at a local show, the Chief Pavilion Steward in consultation with the appropriate Pavilion Section Judges, may select a suitable quilt and, with the exhibitor's permission, enter them in the Group judging as an exhibit representing the particular Society concerned.
12. Group Final location and date is to be determined by the Group. It is the responsibility of either the exhibitor or the Show Society to ensure the quilt is delivered on Judging Day and collected in an appropriate time frame after the competition.



Specialising in Battery & Auto Electrical  
Sales & Repairs

Email: [info@bcbcoffs.com.au](mailto:info@bcbcoffs.com.au)  
[www.bananacoastbatteries.com.au](http://www.bananacoastbatteries.com.au)



44 Marcia Street  
Coffs Harbour

66 52 4455



## SECTION 21 JAMS & PRESERVES

**ENTRY FEE:** \$2.00

**EARLY LODGING OF ENTRIES:** Entries should be lodged as early as possible to assist the office staff.

**POST** ..... The Secretary, Coffs Harbour Show Society, PO Box 219, Coffs Harbour NSW 2450

**EMAIL** ..... [pavilionchshow@live.com](mailto:pavilionchshow@live.com) anytime

**SHOWGROUND** .... 8.00 - 5.00pm Monday 22nd April to Wednesday 24<sup>th</sup> (Look for sign)

**CLOSING DATE FOR ENTRY FORMS:** 5.00pm Wednesday 24<sup>th</sup> April, 2024

**EXHIBIT DROP OFF DATE:** By 5.00pm Wednesday 24<sup>th</sup> April, 2024

**EXHIBIT PICKUP:** 4.00pm Sunday 28<sup>th</sup> April, 2024

**PRIZE: PRIZE MONEY:** 1st \$6.00 2nd \$3.00 unless otherwise stated. Most Successful Exhibitor \$50

Prize money will only be awarded to 1<sup>st</sup> prize if 2 or more exhibits are entered in that class.

Prize money will only be paid to 2<sup>nd</sup> prize if 3 or more exhibits are entered in that class.

**All entries must be the bona fide work of exhibitor.**

### **PLEASE READ**

- Brand names on container and lids must be removed or covered.
- All exhibits must be clearly labeled for identification (e.g. Orange Marmalade) and must display date of production.
- Jam jars to be not less than 250g. No Vegemite Jars
- Filled jars should be no further than 1cm from the top of the jar/bottle.
- Only clear glass jars and bottles to be used.
- Peel, fruit or vegetables in jam, marmalade, chutney, relish and pickles should be evenly distributed.

### **Class**

- 1 Jellies – any variety
- 2 Jam – any variety
- 3 Marmalade – any variety
- 4 Fruit Butter – any variety
- 5 Collection of 3 different varieties of Jam or Jelly
- 6 Preserves – Any variety

### **Class**

- 7 Tomato Relish
- 8 Chutney – Any variety
- 9 Pickles – Any variety
- 10 Relish – Any variety
- 11 Sauce – Any variety
- 12 Pickles – Novice

**CHAMPION EXHIBIT Classes 1 – 12 Certificate & Sash**

**GRAND CHAMPION** Classes 1 - 12

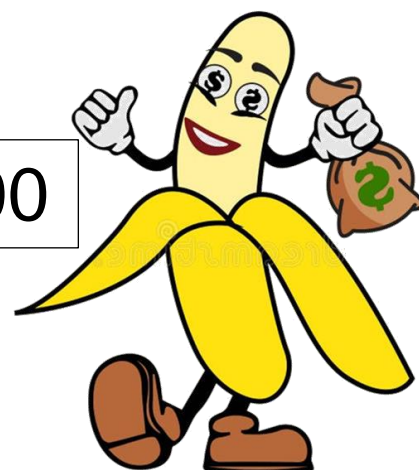
**Most Successful Exhibitor** in Section 21 *Sponsored by* National Sheds & Shelters



## SECTION 24 BANANA CAKE

*Sponsored by Coffs Harbour  
& District  
Banana Growers Association*

1<sup>st</sup> Prize \$100



**ENTRY FEE:** \$2.00

**EARLY LODGING OF ENTRIES:** Entries should be lodged as early as possible to assist the office staff.

**POST** ..... The Secretary, Coffs Harbour Show Society, PO Box 219, Coffs Harbour NSW 2450

**EMAIL** ..... [pavilionchshow@live.com](mailto:pavilionchshow@live.com) anytime

**SHOWGROUND** .... 8.00 – 5.00pm Monday 22<sup>nd</sup> April to Wednesday 24<sup>th</sup> (Look for sign)

**CLOSING DATE FOR ENTRY FORMS:** 5.00pm Wednesday 24<sup>th</sup> April, 2024

**EXHIBIT DROP OFF DATE: NO** later than 9.00am Friday 26<sup>th</sup> April, 2024

**EXHIBIT PICKUP:** 4.00pm Sunday 28<sup>th</sup> April, 2024

***RECIPE BELOW MUST BE USED***

### Banana Cake Recipe

Cream 2 tablespoons butter 220gms (1 cup) sugar in a bowl.

Add 1 beaten egg, and then add 3 whole mashed very ripe bananas one at a time beating well.

Mix in 225g (1 ½ cups plain flour, 1 teaspoon bicarbonate of soda and 1 teaspoon baking powder.

Add 2 tablespoons milk.

Spoon into a greased round cake tin and bake in a 180°C oven for 35-45 minutes.

Long time supporters of the Coffs Harbour Show Society  
***Coffs Harbour & District Banana Growers Association***  
and  
***The Bushfire and Hail Insurance Fund***



**BAILEY CENTRE**

**Liberty**

**Section 24**  
***Scone Competition***

**1st Prize**  
**\$500 Petrol Vouchers**

**Calling all Scone Bakers!**  
**Best Plain Scone**  
***(1 entry per family)***

**Where:** Exhibition Hall

**Drop Off Time:** 9.00am Friday 26<sup>th</sup> April 2024

**Winner Announced:** Grand Parade

**Judging Guidelines**

- 4 plain scones to be presented for judging
- Scones should be even in thickness and diameter.
- Well risen, thin golden crust top and bottom, no flour base.
- Fine, moist texture, good crumb.
- Preferably cut with a round cutter [scone, biscuit] and not a knife.
- Judges decisions will be final

**SCONE RECIPE**

*(This recipe to be used to make scones)*

Sift together 450gm (3 cups) plain flour, 2 teaspoons baking powder and a pinch of salt. Rub in 1 tablespoon butter and gradually add 150ml milk and 150ml water. Stir together lightly with a knife, to make a smooth dough. Roll out 1cm thick, cut with a scone cutter and bake in a 220°C oven 7 – 10 minutes.

***Sponsored by***

***WJ Bailey & Sons – Bailey Centre Service Station***

## SECTION 24 COOKING

**ENTRY FEE:** \$2.00

**EARLY LODGING OF ENTRIES:** Entries should be lodged as early as possible to assist the office staff.

**POST** ..... The Secretary, Coffs Harbour Show Society, PO Box 219, Coffs Harbour NSW 2450

**EMAIL** ..... [pavilionchshow@live.com](mailto:pavilionchshow@live.com) anytime

**SHOWGROUND** .... 8.00 - 5.00pm Monday 22nd April to Wednesday 24<sup>th</sup> (Look for sign)

**CLOSING DATE FOR ENTRY FORMS:** 5.00pm Wednesday 24<sup>th</sup> April, 2024

**EXHIBIT DROP OFF DATE: NO** later than 9.00am Friday 26<sup>th</sup> April, 2024

**EXHIBIT PICKUP:** 4.00pm Sunday 28<sup>th</sup> April, 2024

**PRIZE MONEY:** 1st \$6.00 2nd \$3.00 unless otherwise stated. Most Successful Exhibitor \$50

Prize money will only be awarded to 1<sup>st</sup> prize if 2 or more exhibits are entered in that class.

Prize money will only be paid to 2<sup>nd</sup> prize if 3 or more exhibits are entered in that class.



**Email entries to:** [pavilionchshow@live.com](mailto:pavilionchshow@live.com)

## SECTION 24 COOKING

**ENTRY FEE:** \$2.00

**EARLY LODGING OF ENTRIES:** Entries should be lodged as early as possible to assist the office staff.

**POST** ..... The Secretary, Coffs Harbour Show Society, PO Box 219, Coffs Harbour NSW 2450

**EMAIL** ..... [pavilionchshow@live.com](mailto:pavilionchshow@live.com) anytime

**SHOWGROUND** .... 8.00 - 5.00pm Monday 22nd April to Wednesday 24<sup>th</sup> (Look for sign)

**CLOSING DATE FOR ENTRY FORMS:** 5.00pm Wednesday 24<sup>th</sup> April, 2024

**EXHIBIT DROP OFF DATE: NO** later than 9.00am Friday 26<sup>th</sup> April, 2024

**EXHIBIT PICKUP:** 4.00pm Sunday 28<sup>th</sup> April, 2024

**PRIZE MONEY:** 1st \$6.00 2nd \$3.00 unless otherwise stated. Most Successful Exhibitor \$50

Prize money will only be awarded to 1<sup>st</sup> prize if 2 or more exhibits are entered in that class.

Prize money will only be paid to 2<sup>nd</sup> prize if 3 or more exhibits are entered in that class.

### Hints & Tips for Cookery

- Only round or square tins to be used for cakes. No ring tins.
- Judges are looking for appearance, finish, colour, texture, flavour, aroma, decoration and presentation.
- All prizes awarded are at the judges discretion.
- Packet cakes not allowed unless specified.
- When presenting your exhibits it is best to display them on firm/rigid plates as soft cardboard ones can collapse. Glad Bake or silicone paper under cakes is advisable to prevent cakes from sticking and being damaged while judging
- Unless otherwise specified exhibits to be placed on foil covered hard cardboard (you do not need to purchase premade cake boards). Please allow approximately 4cm wider than the cake.  
e.g. 20cm round cake will need a board approximately 28cm.
- Do not use glad wrap on iced cakes.
- Cupcakes to be presented without cupcake papers.
- When presenting biscuits for showing they should have a crisp unhandled appearance. There should be no flour or grease evident on the bases. Uniform in size.

**PLEASE NOTE:** FRESH CREAM IS NOT to be used to decorate as fresh cream sours quickly in showcases.

## Jack Simmons Menswear



Footwear	Formal Wear	Jackets & Coats
Shirts	Suits	Trousers
Sleepwear	Denim	Underwear & Socks
Shorts	Knitwear	Formal Wear

33 Harbour Drive Coffs Harbour

Ph: 6652 3272

## SECTION 24 COOKING

Class		Class	
1	Carrot Cake – Iced on top only	17	Biscuits – (2) varieties, (2) of each, to be named
2	Butter Cake – Iced on top only	18	Marshmallows – (4) pieces 3cm x 3cm rolled in Toasted Coconut
3	Marble Cake – Iced on top only	19	Damper
4	Chocolate Cake – Iced on top only	20	Bread – Machine or Hand made
5	Gluten Free Cake – Iced on top only	21	Plum Pudding – Boiled
6	Sponge Sandwich – Jam filled, Uniced	22	Plum Pudding – Steamed
7	Cake – any other variety	23	Fruit Cake – Boiled
8	Cup Cakes – (4) Decorated with butter icing	24	Light Fruit Cake
9	Scones – Plain (4)	25	Dark Fruit Cake
10	Scones – Pumpkin (4)	26	RAS Rich Fruit Cake Comp. – recipe next page
11	Slice – baked, one variety (4) pieces	27	Bailey Centre Scone Competition
12	Lamingtons – 8cm x 8cm (4)	28	Mills-Thom's Fruit Cake Competition
13	Muffins – sweet or savoury-one variety (4)		
14	Anzac Biscuits (4)		
15	Chocolate Chip Biscuits (4)		
16	Gluten Free Biscuits (4)		



### THE CAKE THAT FLOPPED

#### Class

- 29 The Camels Hump – Cake Risen in the Middle – No icing
- 30 The Pothole – Cake Sunk in the Middle – No icing
- 31 The Crackpot – Cake with Cracks – No icing

### BANANA CAKE

#### Class

- 32 Banana Cake – Iced on top only. Recipe on Page 34

1<sup>st</sup> Prize \$100

*Sponsored by Coffs Harbour & District Banana Growers Association*

**CHAMPION EXHIBIT** Classes 1 - 32 *Certificate, Sash*

**GRAND CHAMPION** Classes 1 - 32

**Olive Walker Memorial Prize: For best Entry in classes 21 – 25**

**Most Successful Exhibitor** in Section 24 *Sponsored by Jack Simmons Menswear*

# RAS/AGSHOWS NSW

## Rich Fruit Cake Competition

### Class 26 - RICH FRUIT CAKE COMPETITION

- Prize money is sponsored by the Agricultural Societies Council of NSW (ASC).
- Winners at country shows will each receive a cash prize of \$25 and will be required to bake a second "Rich Fruit Cake" in order to compete in a Group Final to be conducted by each of the fourteen Groups of the Agricultural Societies Council of NSW.
- The fourteen winners at Group level will each receive a cash prize of \$50.00 and are required to bake a third "Rich Fruit Cake" for the Final judging at the Royal Easter Show where the winner will receive a cash prize of \$100.00.

Note: Competitors may only represent one Show Society in a Group Final and only one Group in a State Final.

Attention Judges: All Fruit cakes are to be cut in half when being judged.

#### The following recipe is compulsory for all entries in the Rich Dried Fruit Cake Competition

##### Ingredients:

250g (8oz) sultanas

250g (8oz) raisins snipped

into 2 or 3 pieces

250g (8oz) currants

125g (4oz) chopped mixed peel

90g (3oz) red glace cherries chopped

into 4 to 6 pieces

90g (3oz) blanched almonds chopped

cross-wise into 3 or 4 pieces

1/3 cup sherry or brandy

250g (8oz) plain flour

60g (2oz) self raising flour

¼ teaspoon grated nutmeg

½ teaspoon ground ginger

½ teaspoon ground cloves

250g (8oz) butter

250g (8oz) soft brown sugar

½ teaspoon lemon essence **or**

finely grated lemon rind

½ teaspoon almond essence

½ teaspoon vanilla essence

4 large eggs

##### Method:

- Mix together all the fruits and nuts and sprinkle with the sherry or brandy.
- Cover and leave for at least 1 hour, but preferably overnight.
- Sift together the flours and spices.
- Cream, together the butter and sugar with the essences.
- Add the eggs one at a time, beating well after each addition.
- Alternately add the fruit and flour mixtures and mix thoroughly. The mixture should be stiff enough to support a wooden spoon.
- Place the mixture into a prepared square tin 20cm x 20cm (8" x 8") and bake in a slow oven for approximately 3½ – 4 hours. Allow the cake to cool in the tin

**Judge Note:** The height of the cake should not exceed 5.7cm (57mm)

Australian Soil & Concrete Testing

**Luke Daly** **ASCT**  
Director

17 June Street Coffs Harbour  
Ph: 6649 1172 Mob: 0410 082 69  
Email: [luke.daly@asct.com.au](mailto:luke.daly@asct.com.au)  
[coffs.coast@asct.com.au](mailto:coffs.coast@asct.com.au)  
Web: [asct.com.au](http://asct.com.au)



## SECTION 25 CAKE DECORATION

*Please read all instruction in section 25 before entering*

**ENTRY FEE:** \$2.00

**EARLY LODGING OF ENTRIES:** Entries should be lodged as early as possible to assist the office staff.

**POST** ..... The Secretary, Coffs Harbour Show Society, PO Box 219, Coffs Harbour NSW 2450

**EMAIL** ..... [pavilionchshow@live.com](mailto:pavilionchshow@live.com) anytime

**SHOWGROUND** .... 8.00 - 5.00pm Monday 22nd April to Wednesday 24<sup>th</sup> (Look for sign)

**CLOSING DATE FOR ENTRY FORMS:** 5.00pm Wednesday 24<sup>th</sup> April

**EXHIBIT DROP OFF DATE: NO** later than **9.00am** Friday 26<sup>th</sup> April

**EXHIBIT PICKUP:** 4.00pm Sunday 28<sup>th</sup> April, 2024

<b>PRIZES:</b>	<b>Class 1:</b>	1st \$20.00	2nd \$10.00
	<b>Classes 2-11:</b>	1st \$10.00	2nd \$ 6.00
	<b>Classes: 13, 14, &amp; 15</b>	1st \$ 6.00	2nd \$ 3.00
	<b>Most Successful Exhibitor</b>	\$20.00	
	<b>Most Outstanding Exhibit</b>	\$20.00	

**All entries the work of exhibitor and only one entry per class**

Conditions:

- **All classes to use fondant/ready to roll icing for cake covering unless specified.**
- Dummy cakes are permitted as long as the same shape can be constructed in cake.
- Manufactured pillars or any other means of support may be used on wedding cakes.
- Tulle ribbon wires and stamens are permitted while natural dried fine stems may be used with restraint in floral sprays.
- Edible foods e.g. Sugar, coconut, polenta, gelatin, piping gel may be used as part of board presentation and edible colours including lustres and glitters may be used on cakes. Small amounts of wafer paper and edible bridal lace allowed.
- **CLEATS/LEGS** must be attached to all base boards and the board size is limited to 40cm on the display side.
- Novice – restricted to exhibitors who have not won a first prize in a similar class at a previous show.
- No photo imaging.

## SECTION 25 CAKE DECORATION

### Class

- 1 Wedding Cake, minimum two (2) tiers
- 2 Special Occasion Cake
- 3 Cup Cakes: Up to Seven (7) for a special celebration on a board no bigger than 25cm.  
Decorations can be a variety of your theme.
- 4 Novelty Cake
- 5 Gravity defying cake. Dummy can be used but the design must be achievable in cake.  
Height restriction 40cm
- 6 Hand moulded flowers displayed on a plaque
- 7 Plaque – Theme: Babies – Booties, bibs, clothes, toys etc. presented on a 18cm plaque or board with cleats/legs or on a plate stand. Any icing technique can be used e.g. Bas relief, floodwork or modelling
- 8 Miniature Cake, no bigger than 11cm when covered and maximum board size of 15cm
- 9 Cake – open to Novice decorators only
- 10 Novelty Cake, open to Novice decorators only
- 11 Decorated Cake, using buttercream. Decorations in buttercream.

### **Class 12 CHAMPION EXHIBIT Classes 1 – 11**

*Certificate, Sash*

### Junior Classes

**ENTRY FEE:** \$1.00

**Please note: Fondant/ready to roll icing only for Classes 13, 14 & 15**

**All entries the work of exhibitor and only one entry per class**

### 16 years and under

#### Class

- 13 Decorated Cake – not buttercream

### 11-16 years

- 14 Cup Cakes: Up to Seven (7) for a special celebration on a board no bigger than 25cm. Decorations can be a variety of your theme

### 10 years and under

- 15 Cup Cakes: Up to Seven (7) for a special celebration on a board no bigger than 25cm. Decorations can be a variety of your theme

**Sponsors and Supporters  
of Section 25:**

*Coffs Coast District Cake and Sugar Artists of NSW Inc*

Contact for Information on cake decorating:  
Carol 0418 304 106 Denise 6652 3986

## SECTION 26 PHOTOGRAPHY

**ENTRY FEE:** \$2.00

**EARLY LODGING OF ENTRIES:** Entries should be lodged as early as possible to assist the office staff.

**POST** ..... The Secretary, Coffs Harbour Show Society, PO Box 219, Coffs Harbour NSW 2450

**EMAIL** ..... [pavilionchshow@live.com](mailto:pavilionchshow@live.com) anytime

**SHOWGROUND** .... 8.00 - 5.00pm Monday 22nd April to Wednesday 24<sup>th</sup> (Look for sign)

**CLOSING DATE FOR ENTRY FORMS:** 5.00pm Wednesday 24<sup>th</sup> April, 2024

**EXHIBIT DROP OFF DATE:** By 5.00pm Wednesday 24<sup>th</sup> April, 2024

**EXHIBIT PICKUP:** 4.00pm Sunday 28<sup>th</sup> April, 2024

**PRIZE MONEY:** 1st \$6.00 2nd \$3.00 unless otherwise stated. Most Successful Exhibitor \$50

Prize money will only be awarded to 1<sup>st</sup> prize if 2 or more exhibits are entered in that class.

Prize money will only be paid to 2<sup>nd</sup> prize if 3 or more exhibits are entered in that class.

**All entries must be the bona fide work of exhibitor**

### **Guidelines:**

- Photographs **MUST** be taken by, but not necessarily processed, by the exhibitor and be no more than **two years old**.
- Any modification of the image must be done by the exhibitor or under their personal direction.
- Number of entries per individual in each class must not exceed three (3).
- Any one image may be entered in one class only and derivatives of that image may not be submitted as separate images in other classes.
- All photographs must be mounted singularly on black matting.  
Classes 1 – 10. Must be 6" x 8" with mount 8" x 10" or 8" x 12" with mount 10" x 14"
- No glass or framed photographs.
- Mounts are to be marked on the **reverse** side with name, address, class number and title with an arrow to indicate the top of the photo.
- No hangers, tapes or Velcro to be attached to the mount please.
- Make sure the image is titled (on the back of mount).

### **Class**

- 1 Nature
- 2 Landscape
- 3 Macro
- 4 Monochrome
- 5 Portrait

### **Class**

- 6 Flora
- 7 Creative
- 8 Show Scene
- 9 On the Farm
- 10 Action Photo (must show some movement)

**CHAMPION EXHIBIT** Classes 1 – 10 *Certificate & Sash*

**GRAND CHAMPION** Classes 1 - 10

**Most Successful Exhibitor** in Section 26 *Sponsored by* Coffs Harbour Newsagency



# Special Thanks to Our Wonderful Sponsors



37 First Avenue Sawtell  
Ph: 6653 1227

Email: [sawtell@blooms.net.au](mailto:sawtell@blooms.net.au)



232 Harbour Drive Coffs Harbour  
Ph: 6652 2197

Email: [sales@bigcountrymeats.net.au](mailto:sales@bigcountrymeats.net.au)



YOUR  
SHED  
PROFESSIONAL

309 Pacific Highway  
Coffs Harbour

Ph: 6650 9811  
Mob: 0459 919 811

Email: [coffs@nationalsheds.com.au](mailto:coffs@nationalsheds.com.au)  
[www.nationalshedsandshelters.com.au](http://www.nationalshedsandshelters.com.au)



*Special Thanks to Our  
Wonderful Sponsors*

**CLAYTON+FOSTER**  
**ACCOUNTANTS** 

**Coffs Harbour Office**

**6 Lyster Street, Coffs Harbour NSW 2450**

**Ph: 6656 8000**

**Web: [cafa.com.au](http://cafa.com.au)**

**Bellingen Office**

**17 William Street, Bellingen NSW 2454**

**Ph: 6655 1977**

**Web: [cafa.com.au](http://cafa.com.au)**



**Park Beach Homebase Centre,  
252 Pacific Highway,  
Coffs Harbour NSW 2450**

**Ph:(02) 6691 9700**

# Special Thanks to Our Wonderful Sponsors



**KING TIDE**  
BREWING

1 Studio Lane Coffs Harbour

0411 698 992

[cheers@kingtidebrewing.com.au](mailto:cheers@kingtidebrewing.com.au)



## The BAILEY Centre

*Supporting the local community*

### 24 Hr **Liberty** Service Station

<b>rebel</b>	<b>GP</b> GOOD PRICE PHARMACY WAREHOUSE	<b>NUTRITION WAREHOUSE</b> 99¢ BRANDS WAREHOUSE PRICES	<b>PLATINUM</b> BEAUTY & SKIN CLINIC	<b>HARBOUR PALACE</b> CHINESE RESTAURANT
<b>CLASSIC CRUST</b>	<b>Ridgely Didge Pies</b>	<b>FISH, CHIPS &amp; BURGERS</b>	<b>piccolo to go</b> espresso	<b>24hr CAR WASH</b>

# Special Thanks to Our Wonderful Sponsors



**TOYWORLD**  
where the best toys come from

27 Park Beach Road Coffs Harbour  
Ph: 6652 5412  
Email: [coffs@toyworld.com.au](mailto:coffs@toyworld.com.au)  
Web: [toyworld.com.au](http://toyworld.com.au)

**AND**

*A Heartfelt Thank You*  
**TO ALL OF OUR  
AMAZING VOLUNTEERS!**  
We couldn't do it without you!



**Coffs Harbour Show Society Inc.**  
 PO Box 219, Coffs Harbour 2450 Phone: 0409 173 070  
 email: pavilionchshow@live.com

## EXHIBITORS ENTRY FORM

**Please check all sections for closing dates and times.  
 NO LATE ENTRIES WILL BE ACCEPTED**

Section	Class	Description – name of animal, person or exhibit	Entry Fee
eg: 10	23	lettuce	\$2
<b>Total</b>			<b>\$</b>

I have read and agreed to abide by the Rules and Regulations of the Coffs Harbour Show Society and will not hold the Society responsible for any loss or damage to exhibits, accident, wrongful delivery or any other cause whatsoever.

Please Print

Entrants Name:	
Parent/Guardian Name: (If Entrant Under 18)	
Address:	
email:	Phone:
Signed:	Date: