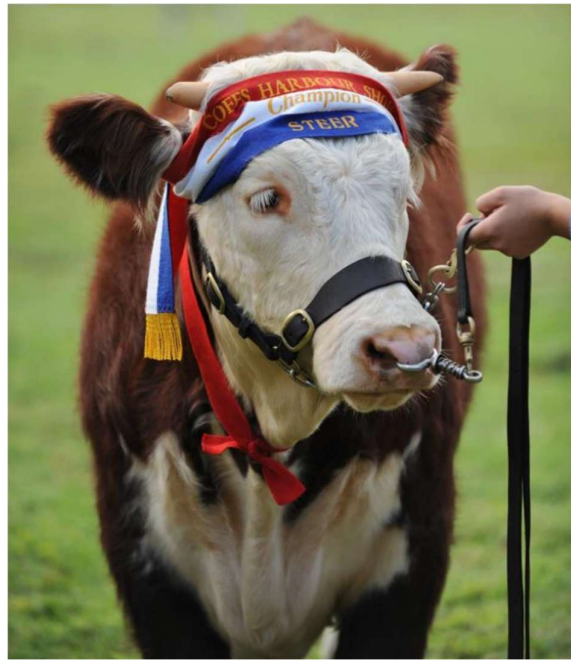


COFFS HARBOUR AGRICULTURAL SHOW

Friday 1st – Saturday 2nd May 2026



BEEF CATTLE



**SUPREME BEEF EXHIBIT
SPONSORED BY**



BEEF CATTLE SPONSORS 2026...

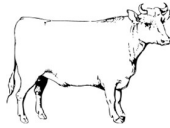


**KJ & CT
CHEERS**



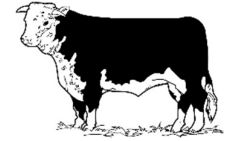
Karangi NSW





SECTION 3 – BEEF CATTLE

PIC # NJ285702
AGE AS AT 1st MAY 2026



LODGING OF ENTRIES Entries should be lodged as early as possible to assist the office staff.

POST The Secretary, Coffs Harbour Show Society, PO Box 219, Coffs Harbour NSW 2450

PHONE Tim Cheers 0411 643 656

ONLINE coffsshow.cattle@gmail.com anytime

SHOWGROUND From Monday 27th April 2026 at the Exhibition Hall

ENTRIES CLOSE Wednesday 29th April 2026

ENTRY FEE \$8.00 per class unless otherwise specified

JUDGING Commences 9am Saturday 2nd May 2026

CHIEF STEWARD Tim Cheers

PRIZE MONEY 1st ... \$ 10.00 + Ribbon

(Unless otherwise stated)

2nd ... \$ 6.00 + Ribbon

3rd ... Ribbon

Cattle Neck Cards will be used this year. Please collect before Judging starts.

CONDITIONS: These conditions and regulations apply to all breeds.

1. All exhibitors are to complete the JOHNES DISEASE Declaration form. Submit the original or a copy with the Animal entry form.
2. All exhibitors are to complete the Indemnity and Waiver form and submit with the animal entry form.
3. It is the exhibitors/owners responsibility to meet all obligations under the NLIS. The exhibitor/owner is to complete the NLIS Livestock Movement - Form A and submit. NLIS Tag Identification numbers are to be provided on the entry form.
4. All exhibitors must send in negative Pestivirus results for each beast with entries.
5. The age of stud beef cattle shall be the actual age up to and inclusive of 1st May 2026.
6. In any protest relative to age the Stewards reserve the right to mouth any exhibit and make the final decision.
7. All exhibits must be made available for inspection to persons nominated by the Society at any time, for any reason whatsoever.
8. All stock must be eligible for registration with the respective breed societies.
9. The Society will not hold itself responsible for any loss or mis-delivery of livestock or other exhibits at the Show or any damage there to.
10. Overnight accommodation is available from 4.00 pm on the day prior to Judging.
11. All cattle must be on the Showground by 7.30 am and remain until after the Parade or the committee may withhold any trophies, ribbons and / or prize money.
12. If any exhibitor/exhibit is not ready to parade when the class is called, then that class will go ahead without that exhibitor / exhibit.
13. It is the owners RESPONSIBILITY for the Handler to be capable of LEADING and animal.
14. HANDLER/LEADER must be over 12yrs of age to LEAD a BULL at the show.
15. All beef cattle must be paraded with a halter.
16. All bulls over 12 months of age must have nose ring and halter.
17. Heifer is a female that has not had a calf and is under 24 months of age.
18. A calf under 8 months of age may parade with its mother.
19. Neck straps, chains or suitable halter must be used on all cattle stalled in cattle sheds.
20. Exhibits not stalled or tied in designated areas may be disqualified. Sawdust bedding is provided by the Society, other bedding to be supplied by the Exhibitor

ACKNOWLEDGEMENT, RELEASE AND INDEMNITY: In entering, competitors and exhibitors agree to abide by any decision of the Committee and agree to compete/exhibit at their own risk and to indemnify and keep indemnified the Society and its Committee, Officials, Members and Volunteers against all claims, suits, actions or demands which may be brought against it in respect of any injuries or other loss sustained in the course of competing and/or exhibiting in any events and/or classes and agree to exonerate the Coffs Harbour Show Society Inc., its Committee and Members from all responsibility and from all loss or injury whether from alleged negligence or otherwise.

PARTICIPANT INDEMNITY AND WAIVER FORM: Each exhibitor must complete and sign an Indemnity and Waiver form.

PRIZE MONEY: Please see each section, prize money will only be awarded for second place when there are three or more entries in that class. Prize money not collected by 4pm on Sunday 2nd May 2026 will be forfeited.

PRIZES AND GST: The Australian Taxation Office has deemed that GST is payable on prizes if an Exhibitor is registered for GST and enters an Exhibit as part of a business enterprise.

Updated 21st January 2026

TROPICAL BREEDS

- Class 1** Bull over 9 months and under 12 months
Class 2 Bull over 12 months and under 16 months
Class 3 Bull over 16 months and under 20 months
JUNIOR CHAMPION BULL – SASH
RESERVE JUNIOR CHAMPION BULL - SASH
- Class 4** Bull over 20 months and under 24 months
Class 5 Bull 24 months and over
CHAMPION BULL - SASH
RESERVE CHAMPION BULL - SASH
- Class 6** Female over 9 months and under 12 months
Class 7 Female over 12 months and under 16 month
Class 8 Female over 16 months and under 20 months
JUNIOR CHAMPION FEMALE – SASH
RESERVE JUNIOR CHAMPION FEMALE - SASH
- Class 9** Female over 20 months and under 24 months
Class 10 Female 24 months and over
SENIOR CHAMPION FEMALE - SASH
RESERVE SENIOR CHAMPION FEMALE - SASH

SPONSORED BY...



Norco Rural
25 Wingara Drive
Coffs Harbour 2450
Ph: 6691 2800

Agricultural Chemicals
Animal Feed
Fertilisers
Animal Supplements
Seeds
Fencing
Farm Equipment

BRITISH BREEDS

SPONSORED BY...



50 Armidale Street
South Grafton NSW 2460
6643 4411

www.raydonovan.com.au
reception@raydonovan.com.au

- Class 11** Bull over 9 months and under 12 months
Class 12 Bull over 12 months and under 16 months
Class 13 Bull over 16 months and under 20 months
JUNIOR CHAMPION BULL – SASH
RESERVE JUNIOR CHAMPION BULL - SASH
- Class 14** Bull over 20 months and under 24 months
Class 15 Bull 24 months and over
CHAMPION BULL - SASH
RESERVE CHAMPION BULL - SASH
- Class 16** Female over 9 months and under 12 months
Class 17 Female over 12 months and under 16 month
Class 18 Female over 16 months and under 20 months
JUNIOR CHAMPION FEMALE – SASH
RESERVE JUNIOR CHAMPION FEMALE - SASH
- Class 19** Female over 20 months and under 24 months
Class 20 Female 24 months and over
SENIOR CHAMPION FEMALE - SASH
RESERVE SENIOR CHAMPION FEMALE - SASH

EUROPEAN BREEDS

- Class 21** Bull over 9 months and under 12 months
Class 22 Bull over 12 months and under 16 months
Class 23 Bull over 16 months and under 20 months
JUNIOR CHAMPION BULL – SASH
RESERVE JUNIOR CHAMPION BULL - SASH
- Class 24** Bull over 20 months and under 24 months
Class 25 Bull 24 months and over
CHAMPION BULL - SASH
RESERVE CHAMPION BULL - SASH
- Class 26** Female over 9 months and under 12 months
Class 27 Female over 12 months and under 16 month
Class 28 Female over 16 months and under 20 months
JUNIOR CHAMPION FEMALE – SASH
RESERVE JUNIOR CHAMPION FEMALE - SASH
- Class 29** Female over 20 months and under 24 months
Class 30 Female 24 months and over
SENIOR CHAMPION FEMALE - SASH
RESERVE SENIOR CHAMPION FEMALE - SASH

SPONSORED BY ...



Elders Rural Coffs Harbour
70 Industrial Dr
North Boambee Valley 2450
02 6650 3400

Elders Coffs Harbour specialises in a range of agricultural services and stocks the rural products you need, for every season.

SMALL BREEDS

SPONSORED BY...



Norco Rural
25 Wingara Drive
Coffs Harbour 2450
Ph: 6691 2800

Agricultural Chemicals
Animal Feed
Fertilisers
Animal Supplements
Seeds
Fencing
Farm Equipment

- Class 31** Bull over 9 months and under 12 months
Class 32 Bull over 12 months and under 16 months
Class 33 Bull over 16 months and under 20 months
JUNIOR CHAMPION BULL – SASH
RESERVE JUNIOR CHAMPION BULL - SASH
- Class 34** Bull over 20 months and under 24 months
Class 35 Bull 24 months and over
CHAMPION BULL - SASH
RESERVE CHAMPION BULL - SASH
- Class 36** Female over 9 months and under 12 months
Class 37 Female over 12 months and under 16 month
Class 38 Female over 16 months and under 20 months
JUNIOR CHAMPION FEMALE – SASH
RESERVE JUNIOR CHAMPION FEMALE - SASH
- Class 39** Female over 20 months and under 24 months
Class 40 Female 24 months and over
SENIOR CHAMPION FEMALE - SASH
RESERVE SENIOR CHAMPION FEMALE - SASH

INTERBREEDS

Class 41	Pair of Bulls - under 24 months owned and bred by exhibitor
Class 42	Pair of Females - under 24 months owned and bred by exhibitor.
Class 43	Cow & Calf. Calf to be under 9mths.
Class 44	Breeders Group - To comprise of 3 animals, with both male and female represented. Exhibits must be owned by the exhibitor.
Class 45	Sires Progeny Group – 2 animals by the same sire, with both male and female represented. Exhibits must be owned by the exhibitor.
Class 46	Open Steer – any breed

SPONSORED BY ...



CHARLINDA POLL HEREFORD STUD Karangi NSW

CLASS 46 – OPEN STEER WINNER –
VOUCHER OR PRIZE TO THE
VALUE OF \$50

COFFS HARBOUR AGRICULTURAL SHOW 2026 – BEEF CATTLE

GUESS THE WEIGHT?



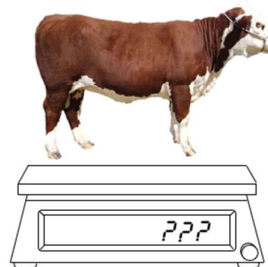
To view the cow and place your guess, head to the Cattle Stalls and Judging Area between 10am and 3pm on Saturday 2nd May 2026



Winner will be contacted on Sunday 3rd May 2026



FREE ENTRY



**COW KINDLY SUPPLIED BY
CHARLINDA POLL HEREFORDS**

**\$50
Voucher**

Supplied By

**Big Country
Meats**

BIG COUNTRY MEATS
232 Harbour Drive
Coffs Harbour NSW 2450
Ph: 02 6652 2197
www.bigcountrymeats.net.au

TERMS AND CONDITIONS

- One guess per person
- Competition runs Saturday 2nd May 2026, 10:00am – 3:00pm
- You must guess the exact weight or nearest guess to the weight wins
- If two people pick the same exact weight or closest weight, each name will be placed in a hat, and the winner will be randomly drawn

COW WEIGHT GUESSING COMPETITION – SATURDAY 2ND MAY 2026

JUNIOR PARADER COMPETITION

ENTRY FEE NIL

PRIZE MONEY 1st ... \$ 10.00 + Ribbon
(Unless otherwise stated) 2nd ... \$ 6.00 + Ribbon
3rd ... Ribbon

SPONSORED BY ...

Class 47	Junior Parader 10 years and under
Class 48	Junior Parader 11 years and under 15 years
Class 49	Junior Parader 15 years and under 18 years
Class 50	Senior Parader 18 years and under 21 years
Class 51	Best Groomed and Paraded School Beef Animal by School Student (any breed, crossbreed, male or female)

**KJ & CT
CHEERS**

**CLASS 51 WINNER – VOUCHER OR
PRIZE TO THE
VALUE OF \$50 TO BE
GIVEN TO SCHOOL**

JUNIOR JUDGING COMPETITION

ENTRY FEE NIL

SPONSORED BY ...

PRIZE MONEY 1st ... \$ 10.00 + Ribbon
2nd ... \$ 6.00 + Ribbon
3rd ... Ribbon

Class 52	Junior Judging 14 years and under
Class 53	Junior Judging 15 years and over

CHAMPIONS OF SHOW

JUNIOR CHAMPION FEMALE	Sash
-------------------------------	------

SENIOR CHAMPION FEMALE	Sash
-------------------------------	------

SUPREME CHAMPION BEEF FEMALE	Sash + Prize
-------------------------------------	--------------

JUNIOR CHAMPION BEEF BULL	Sash
----------------------------------	------

SENIOR CHAMPION BEEF BULL	Sash
----------------------------------	------

SUPREME CHAMPION BEEF BULL	Sash + Prize
-----------------------------------	--------------

SUPREME BEEF EXHIBIT	Sash + Trophy + \$ 200 cash
-----------------------------	-----------------------------

Sponsored by ...



Advance Metal
Industries Australia
183 Orlando Street
Coffs Harbour NSW 2450
02 6652 6955

Windows & Doors
Balustrading
Powder Coating

All exhibitors are encouraged to participate in the Grand Parade commencing at 2.00pm Saturday. All exhibitors leading, riding or driving an animal will go into the lucky draw.